

LULEÅ

the destinations of
**SWEDISH
LAPLAND**
SWEDEN'S ARCTIC DESTINATION

winter/spring winter 

*Northern
lights*

SWEEP ACROSS
LULEÅ'S SKIES

EXPERIENCE

World Heritage Site Gammelstad Church Town

FROZEN WATER

- an arena for
adventures
near the city





Photo: Luleå-Bild

Welcome to Luleå!

Surrounded by the frozen sea, dusted with pure, white snow, Luleå invites you to enjoy playful winter fun – both outdoors and indoors. Use all your senses as you explore the city on the coast of the Gulf of Bothnia. Smell the snow, listen to the sound of your steps creaking in the snow, turn your gaze to the winter night and watch the northern lights dance across the sky.

Discover that winter has many faces. Midwinter, in December, January and February, often brings cold and an abundance of snow. The spring winter in March and April offers sun and pleasant excursions on skis or by snowmobile out on the ice or into the forest.

In Luleå, both city life and great outdoor experiences are always nearby. As are hotels with spa facilities, award-winning gourmet restaurants, cafes, theatre, Kulturens Hus with both a concert hall and an art gallery, sports arenas for hockey and basketball, great shopping opportunities, the Gammelstad Church Town World Heritage Site, all characterised by warm hospitality. Enjoy a day full of learning at Teknikens

Hus – Sweden's northernmost science centre. Jump, play and slide at Leo's Lekland and 360 Trampoline Center. Adventures for all ages can be found at the multi-arena Alcatraz. And all this is just a stone's throw from nature and forests. Really close, yes, in the very town centre, you mustn't miss the opportunity to walk or skate on the frozen water, along the ice track that is prepared every year, from the north to the south harbour. Feel free to take a detour to the nearby archipelago island of Gräsjälören. You may find a fire burning in one of the wind shelters, where you can stop for a break and grill a sausage.

Maybe you are starting to see it now: that those of us who live in Luleå like winter, we only see good things in the snow and the cold. Yes, the fact is that the region's knowledge of cold attracts business – the world-renowned tech company Facebook, for example, placed their first data storage centre outside the US here in Luleå, because of our cold climate. And at Luleå University of Technology, world-leading research is conducted on the subject.

We welcome you to love winter here in Luleå.

Find your way in Luleå



LULEÅ TOURIST CENTER

Luleå tourist center offers tips and advice during your stay in Luleå. Here, you will find maps, brochures and other useful information about Luleå and Swedish Lapland including tips about accessible activities and destinations. The tourist center is responsible for rental of the councilowned cabins in the archipelago. There's a souvenir shop with Luleå-branded products.

Kulturens hus, Skeppsbrogatan 17, Luleå.

+46 (0)920-45 70 00, turistcenter@lulea.se



RÅNEÅ LIBRARY

InfoPoint with staff to ask and brochures to pick up. You can borrow books, read newspapers, use public computers and connect to the internet.

Västerlångvägen 2, Råneå.

FIRST CAMP ARCUS-LULEÅ

InfoPoint available by the front desk. Adjacent to it, you will also find a shop where you can buy food, beverages and tasty treats. You can also find brochures and ask the staff for tips.

First Camp Arcus-Luleå, Arcusvägen 110, Luleå.

ELITE STADSHOTELLET

InfoPoint available by the front desk. Where, you will find tips on things to see and do in and around Luleå.

Storgatan 15, Luleå.

GAMMELSTAD VISITOR CENTER

Start your visit to the world heritage site Gammelstad church town with a visit to the Visitor Center. Here, you will receive a good introduction to the area and all its sights. You can also pick up brochures and maps. Take the opportunity to browse the souvenir shop and the exhibition on the top floor.

Kyrktoget 1, Gammelstad.

Tips! KEEP TRACK OF WHAT'S HAPPENING - ON YOUR OWN OR WITH A GUIDE

With a city center within walking distance of most things, Luleå is the perfect place for interesting experiences. It is easy to find all kinds of entertainment and activities using our city map, which you can collect from the tourist center.

There is much to discover and explore in and around Luleå. If you go out into the great outdoors on your own, a good way to make the experience safer is to share it with others. You will also have more fun.

Would you like someone with local knowledge to show you around? In Luleå and the surrounding area, there are several companies that offer guided tours.

At visitlulea.se there is information about current events and things to see and do.



THE RIGHT OF PUBLIC ACCESS

DO NOT DISTURB AND DESTROY

Swedish law guarantees a right of public access, meaning that we're allowed to roam the outdoors freely. This is a privilege that depends upon people acting responsibly and carefully towards the natural environment and we must treat landowners and people we meet with respect.

RESTRICTIONS

Nature reserves and national parks often have special regulations, restricting the right of public access. There may also be rules governing things such as speed limits and leash requirements for dogs. Motor vehicles may not be driven off-road, on bare ground.

FISHING

You are free to fish in the sea, but there are rules on how, when and what you can fish. Lakes and rivers normally require a fishing licence.

Read more:

[lansstyrelsen.se / naturvardsverket.se](http://lansstyrelsen.se/naturvardsverket.se)

FREE WIFI IN LULEÅ



Free WiFi is available in large parts of the city center and in several of Luleå municipality's public premises. If you wish to use council WiFi, connect to the network LK-GUEST. No login required, users must however agree to Terms of Use. Following the first connection, your device will connect automatically whenever in range of a council WiFi transmitter, as long as WiFi is enabled on the device.

lulea.se

UNFORESEEN CIRCUMSTANCES

We strive to inspire and give you tips that are as up-to-date as possible about things to see and do during your stay in Luleå, but since our circumstances are constantly changing, we advise that some of the information in this winter guide may be out of date.

The winter guide is a complement to our website visitlulea.se.



Magical northern lights

The northern lights, Aurora Borealis, shrouded in magic and mystery, are the visible reaction of particles from the sun colliding with parts of the outer atmosphere, following the whims of the solar winds. The sparkling light experience in green, blue and sometimes even red, then sweeps over the dark night sky.

TOP 3

Photographer Per Lundström is an expert at catching the northern lights on camera. Here, he gives you his top 3 places to see and photograph the northern lights.



CONDITIONS FOR NORTHERN LIGHTS IN LULEÅ

- It has to be sufficient solar energy to create aurorae in the atmosphere combined with the energy impacting the atmosphere at an angle that is suitable for our location.
- Clear skies or scattered clouds are required for the northern lights to be visible.
- Choose an open and suitably dark place. Avoid well-lit places to any extent possible.
- There is no 'timetable'. Northern lights may occur at any point during the hours of darkness and vary in duration.
- Northern lights are visible in Luleå from late August until the first days of April. During the rest of the year, the skies are too bright for the phenomenon to be visible.

Good places to spot the northern lights in Luleå:

- Gamla malmkajen/Cementakajen
The old Ore Quay/
The Cement Quay
- Gäddvik/Laxfiskemuséet
The Salmon Fishing Museum
- Hindersöstillarna
- Karlsvik/First Camp
- Mjölkuddsberget
- Måttundsbacken
- Ormbergsbacken
- Sinksundet
- The ice roads - safety information, please visit: www.lulea.se

The colour of the northern lights depends on the height and speed at which the solar particles collide with the atmosphere.

	RED ABOVE 150 MILES
	GREEN UP TO 100 MILES
	PURPLE ABOVE 60 MILES
	BLUE UP TO 60 MILES

A tip!

For northern lights forecasts, visit: gi.alaska.edu/monitors/aurora-forecast

You can also download the app *Aurora Forecast*, available for both iPhone and Android.



Photo: Per Lundström

1. Gäddvik

A perfect place to go looking for the northern lights, especially by the fishing museum and the small barn next to the pier. A great dark place to spot anything that goes on in the sky above and also good for photography of the water and whatever else of interest that may be captured in the picture.

2. Ormbergsbacken

A classic place for spotting northern lights in Luleå. Here, at the top of the hill, you can quickly and easily see if there is any activity in the sky. You can also get good pictures of the Luleå city lights down below.

3. Sinksundet

This is also a good place, down by the shore. It is dark and by the water's edge you have a great place for photography combined with good visibility, meaning that you can see the northern lights in any direction.

Per's photos can be found on Instagram: [@taigapic](https://www.instagram.com/taigapic)

With guide

There are several companies in Luleå and the surrounding area that offer guided tours.

You will find them under "See & do" at visitlulea.se.

Come along on a historic journey

From the city of Luleå with 250 inhabitants, to Luleå Municipality, with a current population of over 78,000

CITY PRIVILEGES

1621 Luleå was granted city privileges by King Gustav II Adolf. In its first five years, the city grew by 50 people. Soon after, the city was moved from Gammelstad to its current location.

1653 The city has its first fire. Four years after the relocation from Gammelstad, half of the city's buildings were devastated. In 1657, the city burned once again.

1667 The church was opened.

In the **1690's** there was considerable starvation, following years of crop failure.

1716 Russian Cossacks raid and pillage Luleå, killing some 20 citizens.

LULEÅ 100 YEARS

1762 The first major fire in the city consumes two thirds of it.

1790's This decade marks the beginning of the mill era, with the Selet and Melderstein.

1808-1809 The Swedish-Finnish war, Russian soldiers occupy Gammelstad and Luleå, and are plagued by disease, as evidenced by the Russian graves in Alvik and Gammelstad.

LULEÅ 200 YEARS

1857 The County Administrative Board relocated from.

1864 The city council was established.

1883 Construction of the Svartön ore port.

1887 The city burns again.

1888 The first ore train arrives from Gällivare to the port of Luleå.

Luleå's most expansive phase begins in the 1890's, with a population growth of 1,000 percent between **1821** and **1921**.

1905 The first water pipes were built.

1910 Teacher Siri Holm becomes the first woman to join the city council.

1914 World War I breaks out. The Crown's horses were readied in front of the old city hall, and the fleet of ore ships were held in Luleå's south harbour roadstead.

LULEÅ 300 YEARS

1921 King Gustaf V and Queen Victoria arrive on June 11, to celebrate the jubilee.

1939 World War II breaks out. Nazi Germany stored goods for their troops in Luleå. The arson attack on the socialist daily newspaper Norrskensflamman in 1940 leaves five people dead.

1943 Iron production begins at the Norrbotten Iron Mill, and the mill is in dire need of workers. There is a major housing shortage.

1950 The Malmudden residential area is completed, with 458 flats.

1954 The Bergnäset bridge was opened, making the ferry obsolete.

1955 Construction of the city mall, Shopping, was completed.

1958 The city hall was finished.

1969 The municipalities of Nederluleå and Råneå merge with the city of Luleå, to form Luleå Municipality.

1971 Luleå University of Technology was established as Sweden's fifth college of technology.

1970-1980's The residential areas of Björkskatan, Hertsön and Porsön are built.

1976 Plans for the Stålverk 80 steel mill are shelved.

1988 An unforgettable summer of World Cup sailing.

1996 Gammelstad church town is listed for preservation as a UNESCO World Heritage Site, becoming one of fifteen such sites in Sweden.

2011 Facebook decides to construct new server facilities in Luleå.

2019 Luleå Municipality reaches a population of 78,000.

LULEÅ 400 YEARS

2021 Luleå celebrates 400 years. The corona pandemic postponed the celebration with the big cake party until 2022.



Gustav II Adolf, born 1594 at the castle Tre Kronor in Stockholm, died 1632 in Lützen, was King of Sweden 1611-1632. Gustav Adolf inherited the Swedish throne after the death of his father, Charles IX, and took the throne at the age of 16.

Text: Katja Güth Laitila | Graphics: Joakim Höggren

Experience World Heritage Site Gammelstad Church Town



WORTH PRESERVING

Gammelstad Church Town

JUST OUTSIDE LULEÅ you will find Gammelstad Church Town, one of Sweden's World Heritage Sites on UNESCO's list of places worth preserving. Gammelstad actually used to be Luleå's town centre up until the 17th century. Then, land uplift made the Gammelstad harbour too shallow, which meant that in 1649 the town had to be moved closer to the coast.

Luleå's history, however, began in Gammelstad. It was mainly the church, the largest late medieval

stone church in Northern Sweden that served as a gathering place for the locals. Amazingly, the church was built in 1492, and is still standing to this day in the very same place. Church cottages were built to house churchgoers who came from far away, as regular church attendance was mandated by law in Sweden. Today, there are over 400 church cottages preserved in Gammelstad Church Town and the tradition of staying overnight lives on.

visitgammelstad.se



Go by bus to
Gammelstad,
Kyrktorget with
line number 9.
Ticket can be
purchased via the app
Luleå Lokaltrafik.
Read more at:
lt.lulea.se.

Photo: Susanne Lindholm

THE GAMMELSTAD VISITOR CENTER

IN THE MIDDLE OF THE CHURCH TOWN, in the old Betel chapel from the 19th century, you will find the Gammelstad Visitor Center. Begin your visit by discovering the Visitor Center. Here is everything you need to get a nice introduction to the area and all the sights. Here you can pick up brochures and maps, rent an audio guide, book a guided tour of the Church Town or buy a souvenir from the souvenir shop. There is also a new interactive and playful exhibition about Gammelstad's history here.

visitgammelstad.se

Highlights in the Church Town

CHRISTMAS MARKET

During the second weekend of Advent, the annual Christmas Market is held in Gammelstad Church Town. In the marketplace at the Open-air museum Hägnan, there are vendors with tables filled with crafts and treats. A traditional Christmas market, guaranteed to imbue you with the Christmas spirit.

GUIDED TOURS

In winter, the church town is a tranquil place to walk around and it is easy to let your mind drift back into the olden days. The best way to experience the church town is in the company of a guide. Throughout winter, various scheduled activities and guided tours are available for booking. Go on a guided tour of the church town to learn more about it.

Tip! Soon, you will be able to explore the church town around the clock with the help of a smartphone app. Keep an eye on visitgammelstad.se for more information.

EXHIBITION

Upstairs at Gammelstad Visitor Center you will find the exhibition "Gammelstad - A World-Class Church Town". Here you get to know more about Gammelstad through the ages. Fun and interactive elements are interspersed with text screens and more traditional exhibition technology. The exhibition is suitable for the whole family, for example there is a small mouse family that guides the children in the world heritage and you can build your own digital church cottage. Free entry - of course!

THE FIRE FESTIVAL

As the winter dark has settled and the biting cold nips your cheeks, fire is celebrated during a magical, old Scandinavian festival. Experience plays from the Viking Age, see fire-eaters taming the fire, fairytale walks for children, live music and lantern walks. Always on the first Sunday in February.

visitgammelstad.se



Photo: Susanne Lindholm



Photo: Susanne Lindholm



Photo: Susanne Lindholm

CHRISTMAS SMORGASBORD

During the weeks in the lead up to Christmas it is popular to gather friends and family and eat Christmas smorgasbord together. Delicacies like ham, herring, salmon, meatballs and Christmas candy are served. If you would like to experience a traditional Christmas smorgasbord in an historic environment, Kaptensgården is a good option.

restaurangkaptensgarden.se



*Tips on
excursions!*

Cape Wild

Cape Wild is a wilderness centre, 10 kilometres outside Luleå, near the Lule River. Here you can meet and socialise with tame moose and reindeer. They are all very gentle and love to be petted and fed with fruit and vegetables. There is also a souvenir shop here.

capewild.se



Photo: Lule-Bild

The Ormberget outdoor facility

Ormberget is a place well worth a visit, in both winter and summer. The view over Luleå is fantastic and it is a classic place to experience the northern lights. Here there is a ski slope, large sled slope, an extensive system of trails for walking and running, which in winter are prepared cross-country ski tracks, adventure trails, restaurant and barbecue areas.

Read more at visitlulea.se.

Local modes of

TRANSPORTATION

PULK/SLED

Use:

Pulled by someone or something. Used either for cargo or for people. Also used for fun on downhill slopes.

Pros:

Helps you to easily pull things over snow and ice. Fun downhill.

Cons:

There are many different types of pulks. The smaller plastic ones are often fragile and the larger ones tend to be cumbersome.

Difficulty: Few difficulties.



SNOWSHOES

Use:

Second to none if you, like Jesus, would like to walk on (frozen) water in winter. Snowshoes give you the best possible way to move across snow and ice.

Pros: Deep snow will be no obstacle to your exploration of the outdoors.

Cons: Takes a heavier toll on your leg muscles than one might think. Be prepared to become exhausted.

Difficulty: Requires a slightly odd walking technique, very different from your normal walk. A minor obstacle, however, very easy to learn.

KICKSLED

Use:

For short or slightly longer transportation over ice or densely packed snow.

Pros: Suitable for two people.

Cons: Requires a hard, wintery surface. Does not work on gravel.

Difficulty: With basic balancing abilities you'll be just fine.



SNOW SLIDER

Use:

Hunting for adrenaline rushes on steep slopes.

Pros:

Easy to carry.

Cons:

Difficult to steer. Some chance of pain in the rear end.

Difficulty:

Actually staying on the slider all the way down the slope.



TOBOGGAN

Use:

Transport for children, fun downhill toy.

Pros: Steerable, usable for getting children from point A to point B.

Cons: Goes downhill very quickly and is not optimised for safety. Use a helmet!

Difficulty: Steering the toboggan at high speed is very difficult. Be careful if you're not experienced.



JUST DO IT: Walk on water

Experiences close to nature

The island of Gräsö is not far from Luleå's South Harbour. On the island, the charity organisation, Lions sells hot dogs, waffles and coffee amongst other things. They are open on Saturdays and Sundays, 11AM-3PM during the winter whilst the ice track is open and the weather permitting. There is also a heated cabin where you can go inside.

A tip!

The Lions' flag is raised when open for sales.



DID YOU KNOW THAT THE GULF OF BOTHNIA which surrounds Luleå and the Lule River both freeze during the winter? Yes, it's really true. The sea ice turns into a gigantic events arena for winter adventures both big and small.

The ice track that is ploughed on the ice surrounding the city centre, from the North to the South harbour, is loved by everyone, locals and visitors alike. Join the people milling about on sunny winter days, when everyone goes outside to go skating, kicksledding, snowmobiling, walking, grilling sausages, sunbathing, hanging out and just enjoying life together.

In cooperation with Luleå Council, companies offer free public use of kick-sleds so that you can get out onto the ice track surrounding the city. The kick-sleds are lined up at the North and South harbours and there are also "kick-sled parking lots" in other places where the kick-sleds can be picked up and dropped off.

**FREE USE OF
KICKSLEDS
TO EXPERIENCE
THE ICE TRACK**



Photo: Jacob Nilsson



Throughout the winter in Luleå, you can see the large ice breakers Ale, Atle, Frej, Oden and Ymer parked between their missions to keep a channel open through the ice for incoming cargo ships. Standing on the ice by the edge of the channel is a thrilling experience in itself.



FATBIKE

Biking in winter? Sliding around on slippery city streets? No, not like that. Far from it. In recent years, Luleå has become Sweden's fatbike heaven. In summer, visitors go cycling on our islands in the archipelago – during the winter you can also cycle between the islands. The wide, durable tyres of the fatbike means it can get you over any kind of terrain, you can go cycling on the ice to the outer rim of the Bothnian archipelago, with the northern lights above and winter grazing deer around you on the islands outside Luleå.

Read more
visitlulea.se

minus
41°C

Winter facts

In 1999, the lowest temperature so far was measured in Luleå. The thermometer showed -41°C. The Swedish record is -52°C. Greatest snow depth: 113 cm.

Average temperatures

November: -4°C.
 December: -8°C.
 January: -10°C.
 February: -10°C.
 March: -5°C.

Why does the sea freeze?

The Gulf of Bothnia has brackish water, a mixture of freshwater and saltwater. The reason behind this is that eight major rivers flow out into the gulf. The Gulf of Bothnia is estimated to be approximately 4/5 parts freshwater, making it the most freshwater-diluted sea water area in the world. That is why the sea freezes here every year.

Dress properly

To feel really comfortable outdoors in winter it is important to dress properly. Especially if you will be participating in some kind of physical activity. Think layer-by-layer, we recommend wool or some other material that keeps you dry closest to your body. A warm down jacket makes a very nice outer layer if it is really cold outside. And don't forget warm shoes, gloves and a cap.



Did you know...

...that the famous Lovikka mitten was designed in 1892 by Erika Aittamaa in the village of Lovikka? Today you will find woollen mittens and other crafted goods, in the shop Lapland Heartwork, amongst other places.

laplandheartwork.se



Skating in Luleå

LULEÅ IS A CITY THAT LOVES ICE. Centuries of winter and frozen seas have made ice a natural part of Luleå as a city and consequently the people of Luleå have developed a particularly strong relationship with ice skating.

The interest is further heightened by the successful ice hockey teams, always fighting for medals amongst Sweden's best teams, and also by Alexander Majorov, Sweden's best figure skater in modern times, who hails from the city.

However, maybe it's the ice track, the 13 kilometre ice skating paradise that surrounds central Luleå that really earns Luleå its name as an ice skating city. For both visitors and locals alike, the ice track may well be the most popular destination in the city. For more than 15 years, it has encircled Luleå in winter and offered the people of Luleå world-class ice skating on natural ice. The peak season extends from January to March.

The fact is that the locals themselves did not fully appreciate the greatness of the ice track until 2016, when suddenly world famous ice skaters from the Netherlands showed up, trying to set a world record for fastest skating on natural ice. The visiting skaters all said that it may well have

been the best ice track they had ever seen and that they would be happy to come back. News of the amazing ice track spread all the way to the Ice Skating Association in Amsterdam who upon inspection concluded that the rumours were true and decided to organise events in the major Grand Prix series on the ice outside Luleå. Everyone, from professionals to leisure skaters, share the 30 metre wide track and pay nothing for it – skating here is completely free. Something shared by both professionals and hobbyists is the fascination with the fact that the ice track is so close to the city centre.

One moment you can sit in a trendy café or lie in your hotel bed and only minutes later you can be out skating on sea ice. This makes Luleå's ice track something very special.

A tip!

Ice skates can be rented from Äventyrsbutiken Håglunds in the middle of central Luleå: aventyrsubutiken.se.

If you would like a guided tour, visit our web: visitlulea.se.



TRY YOUR LUCK AT WINTER FISHING

YOU CAN SEE PEOPLE SITTING ALONE, for hours, out on the ice of the city's inlets. What are they doing out there? Fishing! The trick is to drill a hole in the frozen water, giving you access to the fish beneath the ice. "Pimpla" is the Swedish word for ice fishing and as the rays of the early spring sun warm you, sitting on a reindeer pelt or a kicksled, you will find that it is a very peaceful pastime. A tip! An easy way to get started with ice fishing is to buy an ice fishing rod and go looking for holes drilled by other fishermen, that haven't yet frozen over.

Equipment for all kinds of fishing can be found at Wildmarksshopen: wildmarksshopen.se.

THE FISH WILL BITE

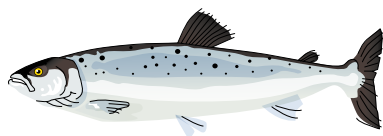
There are many nice places to go winter fishing in Luleå. For instance: Björköfjärden, Furufjärden, Strapösundet, the South and North harbours, Hertsöträsket, Örnabben and Stora Stenträsket.

If you would like a guided tour, you will find information at visitlulea.se under "See & do".



Photo: Peter Rosén

3 FINE FISH YOU HAVE A CHANCE TO CATCH



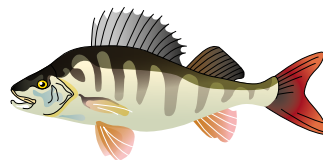
SALMON (*salmo salar*)

A luxurious kind of game fish. A challenge for any fisher, the salmon is a strong and fighting fish. "In Swedish - Lax.



PIKE (*esox lucius*)

The fish considered a delicacy by some and an awful creature by others. Large fish that will put up a fight, tasty if prepared in the right way. In Swedish - Gädda.



PERCH (*perca fluviatilis*)

Probably the most common fish in the Luleå region. Flavoursome fish, a classic delicacy amongst the locals. Tastes best when you catch and prepare it yourself. In Swedish - Aborre.

Illustrations: Lisa Wallin

DISCOVER LULEÅ'S

Winter archipelago



Photo: Peter Rosén

IN THE LULEÅ ARCHIPELAGO, where there are 1.312 islands, many kilometres of winter roads are ploughed, as a service to both visitors and residents. Experience the feeling of driving by car between the islands. Talk to the islanders and be amazed by the fact that in just a few months, the nearby inlet will be filled with boats. Listen to the silence and experience the tranquility, rest your eyes where the unobstructed horizon meets the sky and recharge your batteries with energy from the vast, white vistas. Here there is plenty of room to just be, let your mind wander and find its way home. To you.

Take the car out to the archipelago

Driving a car over the ice of the archipelago or on the frozen river sounds unbelievable to many. To Luleå's locals, however, it is a natural and important part of winter to be able to drive between the islands off the coast. Driving on the ice is risk-free as long as you stay on the ploughed ice roads. The strength of the ice is carefully controlled through test drilling.

Normally, the ice roads open in January or early February, depending on weather and temperature. Clear signage will be in place if the ice roads are temporarily closed and when the season is over. Be aware that limited speed prevail.

Contact Luleå tourist center for information and safety recommendations regarding the ice roads, or read more at: lulea.se

Book a cottage in the archipelago

Brändön

Stay in a cottage at Brändön Lodge. Here you sleep in light, well equipped cottages for up to four people, all with a view of the frozen sea. The cottages have a sofa bed, a toilet, shower, TV, and a kitchen with a fridge and a freezer.

brandonlodgelapland.com

Jopikgården

Luleå Archipelago Adventures offers experiences in the archipelago, in the form of eating, accommodation and activities on Hindersön island. At Jopikgården, you can stay either in a hotel room or at a hostel. The main building, also housing the restaurant, has four hotel rooms on the upper floor. The hostel is found in the so-called Dränglängan, where there are six four-bed rooms. At Jopikgården, you can have activities tailored to your request.

luleaarchipelago.com

The municipality's cottages

Luleå Council offers cottages to rent all year round on the islands Kluntarna, Brändöskär and Småskär. The cottages have between four and ten beds, and sauna facilities with common rooms are available.

Book online via lulea.se/skargard.

For more information - contact Luleå tourist center via 0920-45 70 00 or turistcenter@lulea.se. You can also visit them at Kulturens hus, Skeppsbrogatan 17.



Build an igloo on the ice
and spot the Northern Lights!

MEMORABLE
ADVENTURES
IN THE
ARCHIPELAGO



Photo: Göran Wallin



Photo: Graeme Richardson

The icebergs of the outer archipelago

Book a guided tour by hovercraft to the outer parts of the archipelago. The pack ice, that is the icebergs that build up from the pressure of the open sea meeting the ice of the coastal archipelago, create a truly Arctic environment. The white vistas and ice formations that sometimes grow up to ten metres high are fascinating. You will literally be hovering a short distance above the ground or the ice when travelling in a hovercraft. It whirls and twirls, making the ride an enjoyable experience in itself. By hovercraft you can travel on the frozen sea out into the archipelago even at times when the ice is not strong enough to carry heavier vehicles. The goal of your excursion can either be to visit the pack ice of the outer archipelago or the small island Brändöskär to visit to the old chapel where you will be served hot beverages. Step out of your hovercraft onto the frozen sea ice and with a bit of luck you will be able to spot both seals and sea eagles.

brandonlodgelapland.com

With guide

In Luleå and the surrounding area there are several companies that offer guided winter activities and experiences, both in the archipelago and in the city and in the forest in the countryside. On our website you will find them under "See & do".

visittulea.se



Only a stone's throw

FROM THE CITY TO THE FOREST

COME ALONG INTO THE FOREST, it's right around the corner, and we can make our own tracks in the untouched snow. With skis on your feet and snow to carry you, you can travel a bit farther than on bare ground, turning the winter adventure into an expedition. Snowshoes or a snowmobile both work just as well. The winter forest is something special, everything is white and fluffy, it feels embedded and it dampens all sound. It feels safe somehow, caring.

For those of you who prefer whizzing past on fast cross-country skis on well prepared tracks, there are miles and miles to explore here in Luleå. Have you tried skiing at night? Gliding along illuminated tracks, embraced by the darkness

and with the cool wind on your face, becoming one with the forest, is magical. Look for other signs in the snow and of wildlife in the forest. You may get to see fresh elk tracks, send a snowy white hare running away, meet curious squirrels or a clever fox sneaking around between the tree trunks. Stop for a moment and listen to the birds singing on a glistening early spring day.

The forests surrounding the city have long been winter grazing lands for the reindeer of the Sami communities along the Lule River. Large herds of reindeer feed on the islands in the archipelago and with a bit of luck you can get to meet a lone, wandering reindeer.

Come – let's go out into the forest!



DOGSLEDDING

Would you like to experience speed and excitement along with the dampened sound of paws and runners against snow. Then try dogsledding and feel yourself almost melting into the winter landscape. If you would like to, you could be your own musher. Should you wish, the adventure can start with you being picked up on the ice in central Luleå, just a short walk from your hotel.

For tips on tours to book: visitlulea.se.



SNOWMOBILING

Do as the people of Luleå do and go by snowmobile! No matter if you choose the frozen archipelago or a snug forest environment for your tour, the snowmobile is an excellent wintertime mode of transport. You travel light and fast and you get really close to nature. When it's time to take a break, there's nothing like a hot beverage, or, on longer tours, lunch cooked over an open fire.

For tips on tours to book: visitlulea.se.

Cross-country skiing

ORMBERGET

Experiencing nature whilst gliding on cross-country skis, almost without a sound, at a fast or a slow pace, is just part of everyday life for many people living in Luleå. Illuminated tracks let you ski even when it's dark outside. The most extensive track system can be found at Ormberget, about 4 kilometres from central Luleå, with tracks for both beginners, leisure skiers and professionals, track lengths varying between 1.5 and 10 kilometres. The municipality charges a track fee for anyone over 20 who wants to go cross-country skiing at Ormberget. lulea.se/ormberget

OTHER TRACKS

Other illuminated cross-country tracks are found on Mjölkuddsberget, in Bergnäset, Gammelstad, Sunderbyn as well as in Råneå. No matter whether you prefer gliding through flat terrain, poling through a rougher landscape or trying your strength on steep slopes and then challenging yourself with the bends, you can be sure to find a suitable track in Luleå. Descriptions of cross-country tracks and their current status can be found at: skidspar.se

MAKE YOUR OWN TRACKS

If you would rather make your own tracks, we recommend skiing on the frozen Lule River or the ice in the archipelago, only a few hundred metres away from the city's hotels. Bring ice prods and do not go alone!



IT ALL GOES DOWNHILL

Opportunities for alpine skiing are excellent in Luleå. Twenty kilometres outside the city you will find Måttsundsbacken, a ski resort with several slopes, suitable for beginners and families with children but also challenging for more experienced and daring skiers. You can also go downhill skiing at the Ormberget hill, just on the outskirts of town. There is also a large sled slope there, for those who would like to try snow sliders or sleds.

mattsundsbacken.se | lulea.se/ormberget

Tip! Rent equipment for outdoor activities.
adventyrbutiken.se

Fun and learning

IF BOTH CHILDREN AND ADULTS were to tire of ice and snow, there are plenty of indoor activities in Luleå. Have a day full of learning at Teknikens Hus where you can take a guided tour into an underground mine or land an aeroplane. Jump and play around using all that stored-up energy

at Leo's Lekland and 360 Trampoline Center, after shopping at Storheden, or you can challenge the children to pool and bowling at O'learys. If that's not enough, the city has several indoor swimming pools. Before long, everyone will be ready for more outdoor living.

Photo: Jessica Tervaniemi



ALCATRAZ

A three-storey experience centre. Here you will find; go-karting, VR games, laser games, paintballing, bowling and "Prison Island" - a challenging adventure where you solve tasks from within prison cells. When you get hungry or thirsty, there is a restaurant with a variety of options. Just coming and hanging out is free, you only pay for the activities in which you choose to participate.

alcatraz.nu

Photo: Jennie Pettersson



TEKNIKENS HUS

A popular destination for the whole family. Discover technology in our world, explore together or on your own. Learn more about the internet in our everyday life from the exhibition about Facebook's Luleå Datacenter. Daily screenings in the Planetarium of dome movies or viewing of the starry sky. Family workshops and construction assignments.

teknikenshus.se



KLÄTTERHUSET

Here you will find bouldering, top rope climbing and lead climbing. The motto is that pretty much everyone can climb. There are no rules for climbing - you climb as high as you like, using whatever holds you prefer. The climbing hall has a gym, a shop, a café and changing rooms with showers and a sauna.

klatterhuset.se



O'LEARYS

Welcome to an event arena where you can satisfy your appetite, watch televised games or compete with friends. There are bowling alleys, a games room with arcade games, pinball games, air hockey, billiards and shuffleboard, stands, a restaurant and dance floor. Outdoor seating on the roof!

olearys.se/lulea

360 TRAMPOLINE CENTER

An out of the ordinary adventure can be found in the large facility located in the middle of the Storheden shopping area. In addition to all the attractions, there is a section for coffee breaks and relaxation. The activities in the trampoline park are aimed at all age groups.

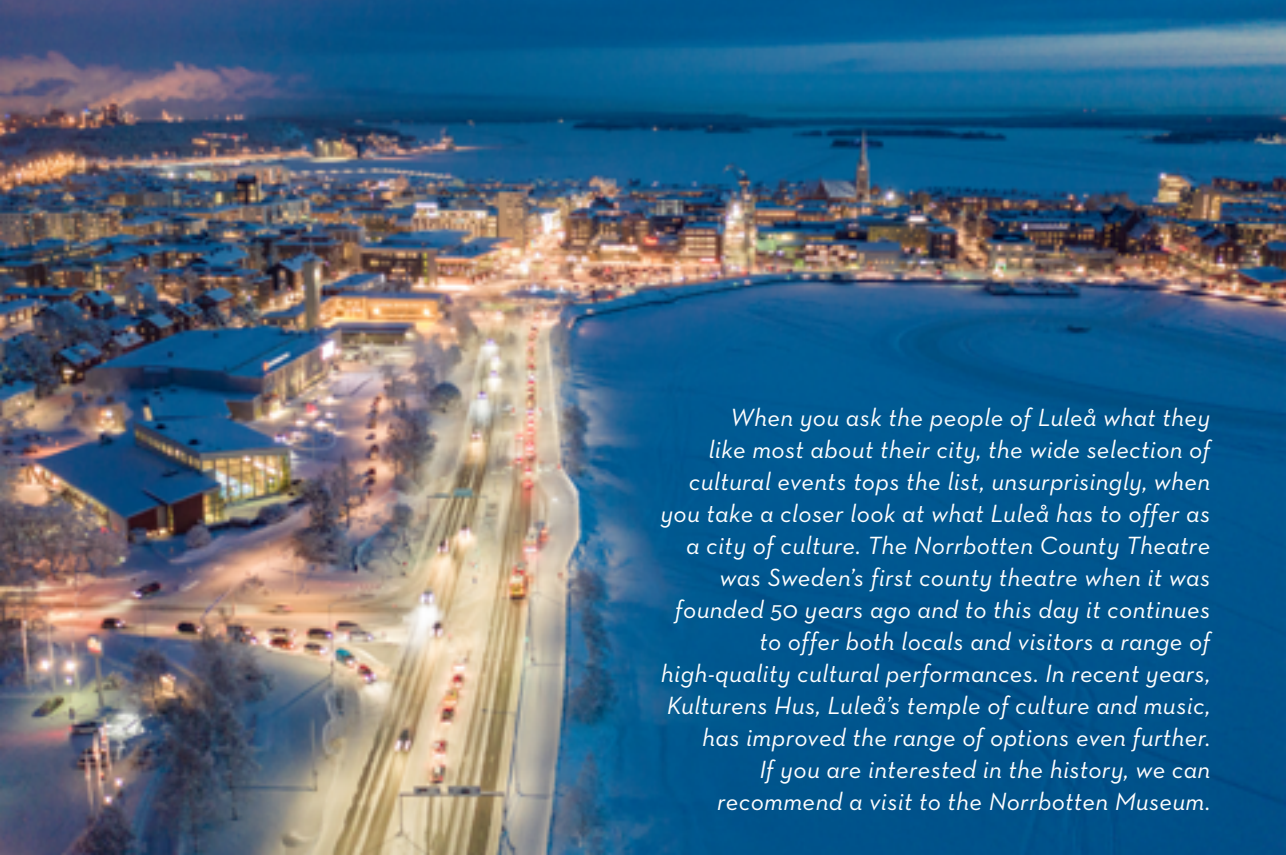
360trampolinecenter.com



LEOS LEKLAND

Ball pit, slide, climbing walls, tubby slide, spider tower and much more for children aged 1 and above. Here, the adults can take the opportunity to hang out in the café while the children play. Connect your phone to Leo's WiFi and surf for free. Relax with TV and magazines.

leoslekland.se



When you ask the people of Luleå what they like most about their city, the wide selection of cultural events tops the list, unsurprisingly, when you take a closer look at what Luleå has to offer as a city of culture. The Norrbotten County Theatre was Sweden's first county theatre when it was founded 50 years ago and to this day it continues to offer both locals and visitors a range of high-quality cultural performances. In recent years, Kulturens Hus, Luleå's temple of culture and music, has improved the range of options even further. If you are interested in the history, we can recommend a visit to the Norrbotten Museum.

FUN WITH HISTORY, ART, CULTURE AND SCIENCE

EBENESER

The old yellow ochre Ebeneser church in the middle of Luleå's high street, Storgatan, is one of the few examples of large-scale Art Nouveau architecture in Luleå. Kulturföreningen Ebeneser is housed here in an inspiring café environment. Ebeneser is a meeting place for those interested in culture and has an open stage for both spontaneous and planned cultural expressions.

ebeneser.nu

KULTURENS HUS

Kulturens hus offers a panoramic view of Luleå's north harbour. The three storey building houses the city library, art gallery, tourist center, conference facilities, concert halls and a café and restaurant. Here you will find a large selection of different cultural and music events. The art gallery displays contemporary art mainly from Sweden, but also from other countries. There are also lectures, an open art workshop and guided tours.

kulturenshus.com

NORRBOTTENS MUSEUM

The Norrbotten County museum shows exhibitions, documentaries from Norrbotten and has activity programmes for both adults and children. The museum also has play areas for children as well as a café and shop.

norrbottnsmuseum.se



Photo: Anders Alm

NORRBOTTENSTEATERN

The Norrbotten County Theatre is beautifully situated in Luleå's North Harbour. Here, high quality performing arts events are staged, for young and old alike. The restaurant in the building, Biströn, is the perfect place to round off a hectic day in the city.

norrbottnsteatern.se | bistron.se

VETENSKAPENS HUS

The city's old post office now houses Vetenskapens Hus, the House of Science. In the large, airy meeting space, you can attend open popular science lectures. The facility is for the public and is an open space for meetings. You can also enjoy coffee, pastries and food at the restaurant Unik, located in the same building.

ltu.se/vetenskapenshus | unikcafe.se/vetenskapens-hus

Charming city pulse

OR EVERYTHING YOU NEED IN ONE PLACE

SHOPPING OPTIONS IN LULEÅ ARE MANY and accessible, with hundreds of shops and malls. Stroll in the city and treat yourself to shopping in small boutiques or in the malls – Smedjan, Shopping and Strand. Most of the major Swedish fashion brands are represented here and you will find a wide selection of fashion, accessories and shoes.

A well-deserved break can be had at one of the cafés, or you could get your nails done, your hair done, or your beard trimmed.

Going north from central Luleå, you will find many stores and shops specialising in construction, interior decoration, gardening and motor vehicles. Further away, at the Storheden shopping district you will find parking friendly shopping with major electronics, sports, interior decoration and pet stores. In Gammelstad Church Town there are cosy boutiques with locally designed products, arts and crafts.



Souvenirs with the local brand Luleå are available for purchase at Luleå tourist center and Visitor Center in Gammelstad.

Lapland Heartwork

If you would like to have something locally produced and typical of Luleå and Swedish Lapland, we recommend Lapland Heartwork in central Luleå. They sell art glassware, warm Lovvika mittens, arctic cranberry and cloudberry jam, tin bracelets and other local crafts and Sami handicraft like wooden cups, amongst other things.

laplandheartwork.se



Avans gårdsbutik

Halfway between Luleå and Boden, on the south side of the Lule River, is Avans gårdsbutik. In the farm shop you can buy leather, yarn and hand-knitted garments. Most skins are sold processed, and some are sewn together for carpets, blankets, seat cushions, pillows and more.

avansgardsbutik.se

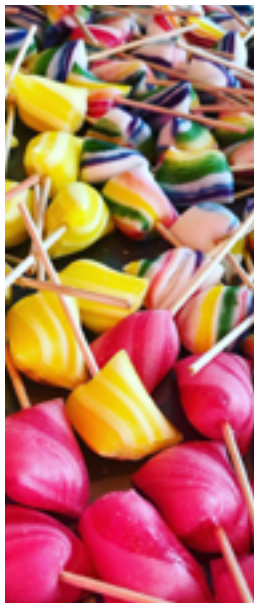


Samlat

A good choice. Visit the second-hand shop Samlat, located next door to the Returpunkt Centrum/Cykelbiblioteket on Köpmantorget. Here you can repair, borrow, exchange and buy recycled goods with the aim of expanding the use and extending the life of gadgets and materials.

Search on [facebook.com: Secondhandbutiken Samlat](https://www.facebook.com/SecondhandbutikenSamlat)

Sweet and tasty



Luleå Konfektyr

In the Kronan area, you will find the company Luleå Konfektyr, which produces handmade pralines, fudge and confectionery from local berries such as Arctic raspberries, cloudberries, sea buckthorn, bilberries and lingonberries.

[facebook.com/
luleakonfektyr](https://facebook.com/luleakonfektyr)



Gammelstads Knäck & karamell

In the candy factory in Gammelstad, pralines are poured, fudge is folded and award-winning toffee is made. Courses and tastings are also held here.

gammelstads.com

The sports city

IN LULEÅ, THE LOCAL SPORTS TEAMS ARE A MAJOR PART OF PEOPLE'S LIVES.

People talk about the latest results with colleagues at work, you meet with friends and family at matches and carefully follow everything that is written about your favourite team. Do what the locals do – go to sporting events and experience the atmosphere!



BC LULEÅ & LULEÅ BASKET

In Sweden, Luleå is known as the basketball city above all others. The men's team BC Luleå and the women's team Luleå Basket are powerhouses when it comes to basketball. With their home arena Luleå Energi Arena and the restaurant Live, they have added an international air to their games. Luleå Basket, Swedish champions in 2014, 2015, 2016, 2017, 2018, 2020 and 2021, has the highest attendance numbers in the country among women's teams.

bclulea.se | luleabasket.com



LULEÅ HOCKEY & LULEÅ HOCKEY/MSSK

The men's team Luleå Hockey draws large numbers of visitors to every game. The women's team Luleå Hockey/MSSK Swedish champions in 2016, 2018, 2019, 2021 and 2022 – has the strongest audience support, by far, in their league. For those of you who have never visited Coop Norrbotten Arena, Luleå Hockey's and Luleå Hockey/MSSK's home arena, the time is now. It's an experience you will not forget anytime soon.

luleahockey.se

Food the Luleå Way

In Luleå there are several high-class restaurants. With chefs leaving internationally renowned Michelin restaurants to settle down right here in Luleå together with a sommelier who has been responsible for drinks during royal weddings. Gastronomic knowledge and qualifications are found throughout the city. Luleå also offers creativity and a safe, relaxed atmosphere. Fine dining is both fine, fresh and fun here!

MIDNIGHT SUN IN SUMMER



1 **TAVERNA GUSTO**
tavernagusto.se

2 **RESTAURANG CG**
restaurangcg.se

3 **HEMMAGASTRONOMI**
hemmagastronomi.se

4 **BISTRON**
bistron.se

5 **KARL AUGUST**
karlaugust.se

6 **AIKO**
aikosocial.se

7 **NINE**
restaurangnine.se

8 **EGO**
restaurangego.se

9 **RESTAURANG ARKIPELAG**
restaurangarkipelag.se



To eat out, OR TO EAT OUT, THAT IS THE QUESTION...

TO EAT OUT has two different meanings in Luleå. Treat yourself and visit one of the local gourmet restaurants, where skilled chefs cook local ingredients, offering you a taste palette from Swedish Lapland. You simply have to eat the delicious, nutritious game, reindeer and elk that have lived in the wild, enjoy game fish that have swum in pure, clear waters and let yourself be seduced by blueberries, cloudberries, arctic raspberries and lingonberries that have ripened in the midnight sun.

To eat out also has a different, more literal meaning here in Luleå – when the food is served outside. Nothing tastes quite as good as a meal cooked over an open fire, especially when it rounds

off a day of great outdoor activities. A muurikka, a large griddle pan, is often used to cook suovas (smoked reindeer meat) or palt (Swedish potato dumplings). And be sure to drink pot boiled coffee. The pot boiled coffee is something of a specialty and a signature beverage in the region. It is served hot in a wooden cup, strong and black – it will warm you and sharpen your senses.

If you'd rather enjoy a latte in a café setting, sit back and feel the city pulse. There are a number of nice cafés and patisseries to choose from.

One thing is for sure: good food and good company are two important parts of the Luleå experience. Welcome to the table!



Photo: Andreas Wälitalo



Photo: Ulrika Holm



Photo: Hemmagastronomi

Local culinary dictionary

MUURIKKA: Portable griddle pan, reminiscent of a wok, suitable for cooking outdoors over an open fire.

PALT: Balls/dumplings made with potato, flour and salt, and, depending on the chef, maybe filled with salted pork. Served with butter and lingonberry jam. If you eat too many, you will become drowsy, or as the locals would say, end up in a palt coma.

SURSTRÖMMING: Fermented Baltic herring, served with boiled potatoes and onion, rolled in flatbread. The smell when opening the can is very peculiar but the taste is known to be far more pleasant, mainly salty.

KAFFEOST: Coffee cheese, also known as Finnish squeaky cheese, for the squeaking sound it makes between your teeth when diced and submerged in a hot cup of coffee, instead of pastries. Also makes a good dessert, lightly fried with warm cloudberries.

GÅHKKU: Chewy Sami flatbread, preferably made on a muurikka. Closely related to the other Swedish flatbreads klädda and glödkaka (lit. 'ember cake').

SUOVAS: Lightly smoked reindeer meat, often salted for preservation. Excellent for outdoor cooking.

TJÄLKNÖL: Frozen wild game, cooked as a steak, on a low heat for many hours, then placed in a salty brine and refrigerated for a few hours before being served as cold cuts.

KÅSA: Traditional drinking or serving container made out of wood, for drinking coffee out in the forest.



Photo: Per Lundström

Time for Swedish 'fika'

A WARMING CUP OF TEA. A FRESHLY BAKED BUN. A strong, invigorating Espresso. A molten chocolate cake with cream. A steaming hot cup of chocolate. There are many varieties of a Swedish fika and what could be better after a day in the great outdoors, than visiting one of the city's cafes.

In the mall Smedjan, you will find the traditional **Börje Olssons Konditorier**. Since 1958, they have been serving good coffee, fresh, hearty sandwiches and sweet baked goods from their own bakery.

On Storgatan there is **Wallsten's café**, which shares an entrance with the clothing store Hanzéns. Here there is a good selection of green dishes, organic wines, fresh fika and organic coffee.

On Storgatan there is also **Friends Fika & Food** where you can have a fika or eat something savoury from the à la carte menu. The sweet treats are delivered daily from own

bakery and the range varies with the season and the baker's inspiration.

At **Café La Vache**, in a small, cosy, corner location at the Storgatan/Kungsgatan, you will find hot and cold drinks of the highest quality. Enjoy them with pastries, bowls, salads and sandwiches.

At Bergviken just outside Luleå's city centre, visit **Lilla skafferiet** – a café, bakery and boutique. Here, you can enjoy pastries or a healthy snack with coffee or tea, or enjoy a Swedish smörgåstårter – a layered sandwich cake – for lunch.

See visitlulea.se for more tips!



Photo: Carl-Johan Ulvi

Deli

In Luleå you will find a wide range of delicacies and foods, both local and global. Everything from small farm shops in the countryside to cafes and restaurants with deli sections, they are all found in Luleå. Here, we list recommendations for some of them. You can find more at visittlulea.se.

At **Gusto Café & Deli** in Bergströmska gården you will find culinary products from all over the world. Lunch bags and pizza kits are also available here.

The shop at the **Hemmagastronomi** restaurant offers a variety of cheeses and charcuterie, hand-painted chocolate truffles, olive oils, coffee, tea, etc.

The Strand Galleria is home to **Emporio Barattini** which sells high-class Italian delicacies.

For four generations, the Pettersson family has been making cured meat products. You can find **Janne Petterssons charkdelikatesser** at the Storheden shopping district.

The Smedjan mall is home to **Noah**, a shop offering food products from producers in Norrbotten.

At the beginning of Smedjegatan is **Norrlands Oriental Livs**, which has food from all corners of the world and staff who are more than happy to help you with tips and tasty recipes!

Köttbutik on Storgatan does its own cutting, which means that they take care of the whole animal and offer a wide range of fine cuts.

Systrarna Rosenskärs Gårdsbutik is a farm shop in Jämtön outside Råneå, offering locally produced delicacies, home-made pastries and also beef, lamb, reindeer and elk venison.

Local and global

THE PEOPLE OF LULEÅ DO NOT ONLY ENJOY LOCAL DELICACIES. The city also offers flavours from all over the world. Below, a few tips on what to try here.

BASTARD BURGERS

While they do cook their burgers with ingredients from Swedish Lapland, their flavour and atmosphere is firmly rooted in street food culture. Flavoursome, hip and well made fast food.

bastardburgers.com



PINCHOS

Pinchos is a unique, app-based restaurant concept, offering a wide range of small courses from all the world's cuisines, everything from Spanish quesadillas to Asian dumplings and French Crème brûlée.

pinchos.se



RÅVARA

Sushi, poké and health dishes. Råvara make it easy to eat good and healthy food both for lunch and dinner. The menu has local specialties with a local, yet international flavour.

ravarar.nu

AIKO

With inspiration and influences from Asia and South America Aiko serves dishes that can easily be shared and enjoyed together.

aikosocial.se



METATE RESTAURANG

Authentic Mexican food where tortillas and totopos are handmade. All products are gluten-free. Here is also offered vegan dishes.

metate-restaurant.webnode.se



TAVERNA GUSTO

An Italian restaurant with two different sections. Neapolitan pizza on one side and classic pasta dishes, bruschettas and an Italian 3-course menu on the other.

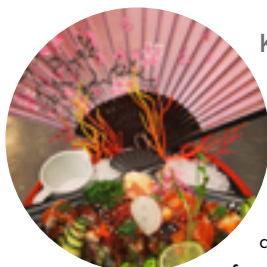
tavernagusto.se



KAZOKU RESTAURANT

Food should not only taste good. It should also be a feast for the eyes. And here the arrangements of the sushi dishes are unique, decorative and creative.

facebook.com/kazokululea



When the local ingredients are seasoned with innovative ideas and international flavors, an innovative emerges cooking and an interesting restaurant culture that we are proud to tell you about. Take part in Food The Luleå Way. Taste and experience. You can find more tips on places to eat well at visittlulea.se.



TRY BARHOPPING IN LULEÅ

If you like music and hanging out with friends, there are plenty of places to enjoy. We will guide you through a local bar crawl: We will start at the top of Storgatan at **Restaurant CG** and **Bar CG** which both have a wide selection of gin and rum based drinks. How about a Hemingway Mojito?

Continuing down Storgatan, at **Elite Stadshotellet**, you will find **The Bishop's Arms**, with Luleå's largest selection of beer and whisky. Try their own beer, from Luleå's only microbrewery pub, or participate in their beer tastings.

Then we will take a detour down to the North Harbour and **Hemmagastronomi** where the cocktail bar is open from the afternoon until late at night.

In a harbour warehouse further down you will find **Biströn** and here you can also treat yourself to a drink if you are visiting the Norrbottensteatern next door.

Back on Storgatan again, we visit **Karl August**, who serves new drinks and old treats.

If you are aiming for the stars, take another detour to Luleå's only sky bar and restaurant **Nine** at **Clarion Hotel Sense** across the street from Kulturens Hus. Enjoy a good cocktail with a fantastic view of the rooftops and Luleå's North Harbour.

The crawl nears its end as we return to Storgatan, dropping in to **Ego Bar & Restaurant** at **Hotell Savoy**. Here you can relax with something from the bar and listen to music. As we said, Luleå has something for everyone.

Bottenvikens Bryggeri

All beers are created from high-quality ingredients and often with local elements in both origin and flavour. For example, Bottenvikens Bryggeri decided, in collaboration with Tornion Panimo and Pite Bryggeri, to celebrate Luleå, Piteå and Tornio's 400th anniversary by creating their interpretation of how a beer may have tasted in 1621. So what is our verdict? Well, if the beer was this good 400 years ago, no one was left wanting!

Not only is beer brewed here, it is discussed as well. So, for those of you who want to taste the different brews. Book a tasting session via bottenvikensbryggeri.se.





Swim calmly

PONTUSBADET

Pontusbadet is a charming 1950's style swimming pool complex, focused on various forms of swimming training and competitive swimming. The pools are used by swimming associations and individuals swimming for leisure.

lulea.se/pontusbadet

Exercise on your own and in a group

In Luleå there is a large selection of gyms and opportunities to exercise – and at some you can exercise around the clock. Most facilities offer broad and varied training. From strength machines to group training sessions. Some have personal trainers and medical staff.

visitlulea.se



Photo: PDL Center

Play padel and tennis

PDL CENTER

PDL Center has three facilities with tracks that maintain high quality. Everyone is welcome here – from beginners who are playing for the first time to advanced players who want to take their padel game to the next level.

pdlcenter.se – choose between: Luleå, Luleå (Gammelstad) or Luleå (NRJ Arena).

LULEÅ TENNISKLUBB

Luleå tennisklubb was founded in 1907 and is one of the country's oldest tennis clubs.

At the time, the sport was played on a rammed earth track outdoors. Today, there are four indoor tennis courts, four outdoor clay tennis courts and Luleå's only outdoor padel courts.

luleatk.se

Relax and enjoy

AFTER A DAY OF SUNSHINE, FRESH SEA BREEZES and activities, it is lovely to indulge yourself with a spa treatment. The word 'spa' can be traced back to the Latin phrase "salus per aquam" meaning "health through water". Regardless of whether you would like to use the pool, sauna or some other form of aquatic relaxation, as well as relaxing and beautifying treatments, there is a very wide range of options in Luleå. Try the seasonal sauna at Clarion Sense, enjoy the bubbles of the Hotell Savoy jacuzzi or splash in the outdoor pool at Alcatraz. A visit to Luleå can definitely leave you feeling revitalised, as alongside spas there are also plenty of hair-dressers, barbers and beauty salons.

clarionsense.se | hotellsavoy.se | alcatraz.nu



Thanks & good night!

SLEEP WELL IN TOWN OR NEAR NATURE

SINCE LULEÅ IS AN OLD MEETING PLACE, with a long tradition of welcoming hospitality, it is only natural that the city offers a wide range of accommodation options. Either close to the natural environment or to the pulse of the city. Maybe begin, or round off, your visit by exploring the city?

In general, the standard of accommodation in Luleå is high and you have plenty of options, hotel chains such as Scandic, Elite and Best Western, as well as private alternatives. High-class Clarion Hotel Sense and Hotell Savoy, both with spa facilities, restaurants and bars, are located near the city centre. Those of you who are looking for more affordable options have several hostels and budget hotels to choose from. Timbered, rustic



Photo: Graeme Richardson

charm can be found at Brändön Lodge, out by the sea and enveloped by the forest. Out on Hinderö in the Luleå archipelago lies Jopikgården – a well-preserved treasure.

Why not spice up your stay by making the accommodation an adventure in itself? Park your camper van, or rent a cottage at First Camp. Less than an hour away from the airport and the city, several spectacular, natural accommodation options await you – where you will find memories to last a lifetime.

Read about different accommodation in Luleå at visitlulea.se.



Photo: Camilla Niemi



Welcome to Sweden's Arctic Destination!

In Swedish Lapland you can explore new adventures in an arctic environment. You're a long way north, around the Arctic Circle, but thanks to the warm Gulf Stream of the Atlantic Ocean you can comfortably experience all the seasons. With vast contrasts from polar nights with northern lights in a white winter landscape, to warm summers with a hundred days without night under the midnight sun.

In the east – a 300 km coastline facing the Gulf of Bothnia – the world's largest brackish water archipelago with thousands of islands. Sandy beaches, fishing camps and unique raw ingredients. In the west – majestic mountains, streams with water so clean you can drink it and great adventures right around the corner. And in between the quiet, mysterious forest and river valleys from Skellefteå River in the south to Torne River in the north-east which all have their unique features.

Traditions and culture are strong here, and the love of nature is even stronger. This is our everyday-life, and we invite you to share it with us. swedishlapland.com



Luleå Business Region is working to develop trading, meeting and reasons for travelling to Luleå. Our mission is to make Luleå known as a lively, competitive and attractive city of commerce; close to people, nature, an archipelago and various activities. luleabusinessregion.se