

A Travel Guide to

LULEÅ

Winter, spring-winter, spring,
summer and autumn. Welcome to
experience all our seasons.



ALL YEAR ROUND



NORTHERN LIGHTS AND
MIDNIGHT LIGHTS



LULEÅ ARCHIPELAGO
WITH 1 312 ISLANDS



GAMMELSTAD CHURCH TOWN
WORLD HERITAGE SITE



Luleå – all year round

Experience the striking contrasts of our seasons – from snow, cold, and a frozen sea in winter to sunshine, warmth, and the midnight light in summer. From September to March, when conditions are right, you can witness the northern lights, Aurora Borealis. All year round, enjoy indoor activities, shopping, and the culinary delights of the food city of Luleå.

Winter			Spring-winter and spring			Summer		
DEC	JANUARY	FEBRUARY	MARCH	APRIL	MAY	JUNE	JULY	AUGUST
NORTHERN LIGHTS , AURORA BOREALIS				MIDNIGHT LIGHT				
INDOOR ACTIVITIES								
SHOPPING								
THE FOOD CITY								

Seasonal variations give varying weather and temperatures. On clear and windless days during winter, temperatures can drop to between -30°C and -40°C , while the hottest days in summer can be close to $+30^{\circ}\text{C}$. Around Christmas, when it is at its darkest in Luleå, we can see the sun over the

horizon for just over 3 hours. As early as March, the sun is up for about twelve hours and during the summer the days are almost endless.



Welcome to Luleå

*This is where it happens. Here, you can explore history – and the future.
Experience the best of vibrant city life and breathtaking natural surroundings.*

The eyes of the world are turning to Luleå for many reasons, and the city has become an increasingly popular destination.

As the capital and largest city of Norrbotten County, Luleå offers a rich mix of shopping, entertainment, culture, sports, top-class restaurants, and hotels. Whether you're looking for outdoor adventure or indoor fun, there's something for everyone.

You can also visit a historical World Heritage Site, Gammelstad Church Town, recognized by UNESCO as a culture treasure worth preserving. Luleå is also a key hub in the ongoing global transition. Hundreds of billions are being invested in new climate-smart industries and innovations focused on the sustainable development of goods and services.



Luleå boasts the world's largest brackish water archipelago, with 1,312 islands, islets, and skerries, as well as beautiful river valleys, and vast forestlands never far away – meaning you're always close to both urban and nature-based activities.

With a city center surrounded by water and most attractions within walking distance, Luleå is the perfect place to visit – all year round.

Experience the dramatic contrasts of the seasons – from snow, cold, and a frozen sea in winter to sunshine, warmth, and midnight light in summer. And if you fall in love with Luleå and consider moving here, check out the website [movetolulea.com](https://www.movetolulea.com). There, you can learn more about working, living, studying, and enjoying life in Luleå. Whatever your reason for coming, you are always welcome here!





LULEÅ KOMMUN

Luleå Municipality has nearly to 80,000 inhabitants and is the 29th largest municipality in Sweden.

Luleå Airport is the country's fifth largest, located only 10 minutes by car from the city centre. Over one million travellers pass through it annually.

The port of Luleå is Sweden's northernmost and one of the country's largest ports. Icebreakers and tugboats keep the waterways open during winter.

Luleå University of Technology, LTU, with 19,000 students and 1,900 employees conducts world-class research and education.

Luleå has a diverse business landscape, ranging from steel and technology industries to a broad service sector, growing trade and tourism and emerging creative industries such as film production and digital design.

Facebook chose Luleå for its data centre halls due to the favourable climate and access to clean energy. Facebook's data centre in Luleå is the largest in Europe.

Gammelstad's church town is a UNESCO World Heritage Site home to over 400 church cottages and a stone church from 1492 that is still in use today.

Luleå is a sports city with clubs active in most sports. There are successful pro teams for both women and men in basketball and ice hockey.

Luleå has a wide range of **music, dance, theatre, film, art and history**.

Luleå is one of Sweden's **sunniest summer cities** with an average of 12 hours of sunshine per day.

Photo: Jennie Lind



Photo: Burban Studios



Photo: Burban Studios



Photo: Peter Rosén



Photo: Burban Studios

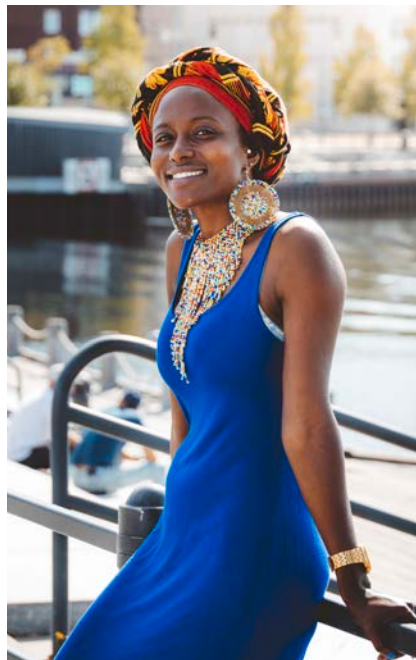


Photo: Burban Studios

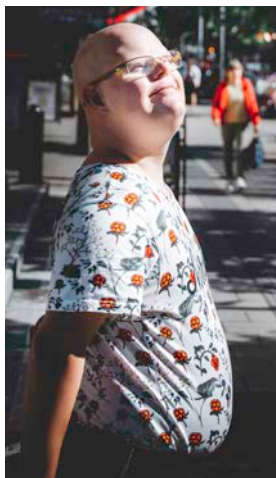


Photo: Susanne Lindholm



THE LULEÅ WAY – AN EXHIBITION ABOUT TRANSFORMATION

An industry transitioning to fossil-free production and a city aiming to be a sustainable and vibrant community for future generations. In short, that's what the societal transformation is all about. Luleå is right at the heart of it all. And right in the city center, in the Shopping Galleria, there's an exhibition that tells the story of this journey – The Luleå Way. The exhibition is open every day that the Shopping Galleria is open. Welcome!

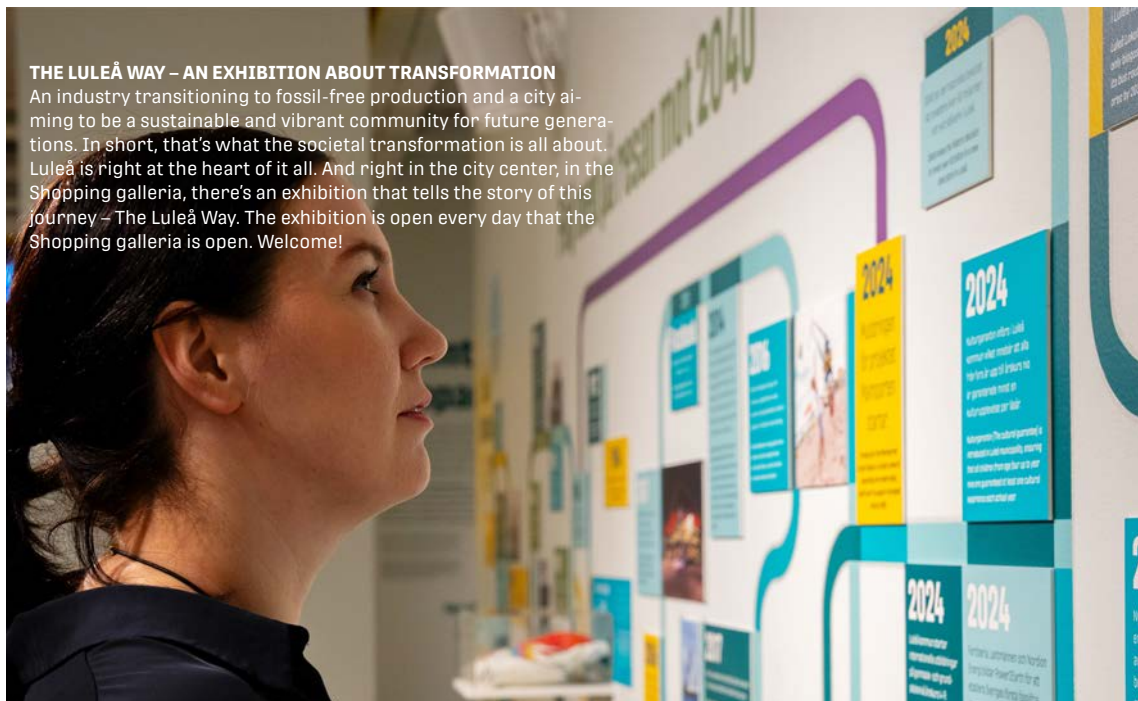


Photo: Josefín Högström



Photo: Jennie Lind



DID YOU KNOW...

...that there are five national minorities in Sweden; Jews, Roma, Swedish Finns, Tornedalians and the indigenous Sámi people?

The national minority languages are Finnish, Yiddish, Meänkieli, Romani Chib and the Sámi languages.

There are three linguistic administrative areas in Sweden – one for Finnish, one for Meänkieli and one for Sami. **Luleå Municipality** is part of all three, which means that the speakers of these languages have the right to use them in contact with authorities, as well as the right to pre-school and elderly care where all or a significant part of the services are provided in the minority languages.

Landmarks

Our coastal city has several popular landmarks to check out – and no matter where you are on the central peninsula, they're never far away. Take a walk from north harbour to south harbour and experience them all.



Photo: Per Lundström

Bergnäsbron (The Bergnäset bridge)

Building the arch bridge that bridges the central peninsula to Bergnäset began in 1950. Previously, people had crossed the route by ferry and on ice roads. The bridge was opened in 1954 by Prince Bertil and was Sweden's second longest bridge at the time. Today, around 17,000 vehicles pass here per day.

Hamnkranen (The harbour crane)

The tilt-arm gantry crane that stands proud in Luleå's Södra hamnplan is a monument that bears witness to Luleå's era as a maritime city and to the industrialisation after the Second World War. The crane was last used in 1985 and is a popular feature in pictures from Luleå. Selfie friendly.

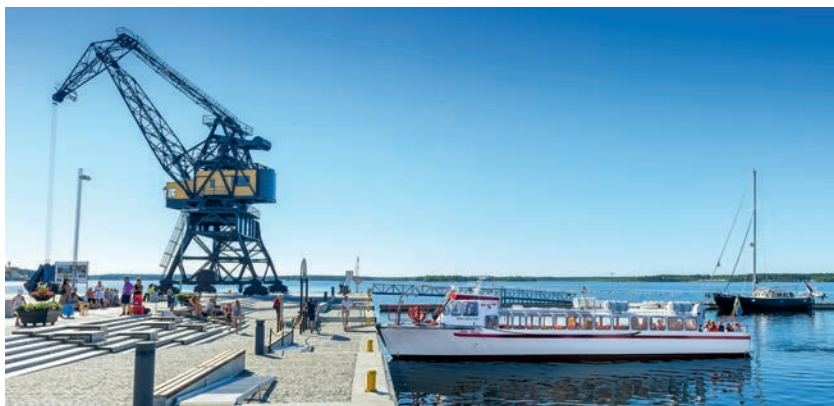


Photo: Lule-Bild



Isbrytarna (The ice breakers)

A powerful sight, summer and winter, are the six icebreakers in Luleå harbour – all with names from Norse mythology; Ale, Atle, Frej, Ymer, Odin and Idun. Each icebreaker has its own special function, for example the Oden is used during the winter for icebreaking in the Gulf of Bothnia and during the summers is chartered out for research expeditions in the Arctic.



Norrbottensteatern (The Norrbotten County Theatre)

Among the red wooden warehouses by Luleå's north harbour stands the Theatre House, which was inaugurated in 1986. The house was designed by the Swedish architect Hans Tirsén and is today the home of Norrbottensteatern, which is a county theatre. There are also two restaurants, a delicatessen and the Theatre Academy here. In summer you will find lovely outdoor seating along the quay, in winter you can go down to the ice track via the ramp by the theatre.



Luleå domkyrka (Luleå Cathedral)

Construction of Sweden's northernmost and youngest cathedral began after the severe fire that hit Luleå in 1887. At the time of its inauguration in 1893, it was called Oscar Frederic's Church, after King Oscar II. In 1904, it changed its name to Luleå Cathedral, as the Diocese of Luleå was formed. The architect who designed the cathedral was Adolf Emil Melander from Stockholm. This grand brick church is built in the Neo-Gothic style. The gallery organ with its 4,585 pipes – built by organ makers Grönlunds, the altarpiece painted by Garibaldi Lindberg in 1893 and the triumphal crucifix by Carl Fagerberg have always fascinated visitors. Around the church there is an old cemetery where, in the summer of 2022, finds were made in the form of gravestones from the 17th century.



The world heritage site Gammelstad Church Town

Just outside Luleå lies Gammelstad's Church Town, one of Sweden's 15 world heritage sites on the UNESCO World Heritage List of places worth preserving.

The church town was in fact the place where the city of Luleå was first founded in the 1620s. However, the post-ice age land uplift caused the harbour in Gammelstad to become too shallow and the town was forced to move closer to the coast in 1649. But it was in Gammelstad

that Luleå's history began. It was mainly the church, the largest late medieval stone church in Northern Sweden that served as a gathering place for the locals. The amazing thing is that the church has remained in the same place since 1492 and is still in use today.

Surrounding the church are over 400 preserved church cottages. These were built to accommodate churchgoers who travelled long distances, as regular church attendance was once required by law in Sweden. The tradition of temporary accommodation during church weekends lives on to this day.



Photo: Peter Rosén

Photo: Susanne Lindholm



Photo: Susanne Lindholm



GUIDED TOURS

Guided tours are available year-round on selected dates and times. Tours start at the Visitor Center and last approximately one hour. During the tour, you'll stroll through the cosy alleys and explore Gammelstad's rich history. You'll learn about life in the church town in the past and how the cottages are used today. The tour includes visits to both a church cottage and the medieval stone church (unless there is a private service on-going). Book online to secure your spot.

EXPERIENCE WITH OUR APP

With the free Visit Gammelstad app, you can explore the church town and the open-air museum Hägnan through guided tours, quizzes, and exciting stories. For example, you can take an audio-guided reflection walk among the church cottages, or let the children join an adventure with the Gammelstadsson mouse family as they complete fun missions along the way.



Gammelstad Visitor Center

In the middle of the church town, you will find the Gammelstad Visitor Center in the old Betel Chapel from the 19th century. Here, you'll get a nice introduction to all the attractions in the area through brochures, maps and the help of our knowledgeable tourist information staff. You can also book guided tours, browse the souvenir shop and visit the free exhibition "Gammelstad – a World Heritage church town". Here you can find out more about Gammelstad through the ages. Interactive elements are interspersed with text screens and more traditional exhibition technology. The exhibition



Foto: Susanne Lindholm

is suitable for the whole family. The mouse family Gammelstadsson helps to explain the world heritage in a fun and simple way. Come and look for them, they hide where you least expect it.

At visitgammelstad.se

there is information about guided tours and programs for the area's activities and events.



TAKE THE BUS TO GAMMELSTAD

Take route 9 with LLT (Luleå Lokaltrafik). Get off at the Kyrktoget stop. Tickets can be purchased via the "Luleå Lokaltrafik" app.



The open-air museum Hägnan

Just a stone's throw from the church town in Gammelstad lies the open-air museum Hägnan, offering a wide range of activities and experiences for all ages. The museum features historic buildings across the region, showcasing life in the rural farming society of northern Sweden from the late 18th century to the 1940's. Don't miss the charming country store, that offers a journey back in time.

During the summer months, enjoy a coffee at Café Fägnan or bring your own picnic basket and relax on the grass. Then take a walk and visit the horses, cows, pigs, goats, rabbits and chickens on the grounds.

In winter, during the low season, the museum grounds are closed, except for special events. However, the outdoor area is always open to visitors. There is a barbecue area on site that is free to use, so pack a lunch bag and cosy up by the fire.

Explore Hägnan digitally

If you are unable to visit in person, or if you're exploring the open-air museum off-season, you can still discover Hägnan's buildings digitally. Several of the larger farms and outbuildings – Dasset, Storgården, Peri-Hanscha, Torpet, Loftboden, Lant-handeln and Härbret – are equipped with QR codes. Simply scan the code on-site to learn more about each building and its history.



Photo: Susanne Lindholm

Luleå's history in brief



Participate in a 400-year journey. From the city of Luleå in 1621 with 250 inhabitants to today's Luleå municipality with close to 80,000 inhabitants in 2024.

Illustration: Joakim Höggren
Text: Katja Güth Laitila

1621 In 1621, Luleå received city privileges from King Gustav II Adolf. In its first five years, the city grew by 50 inhabitants. Eventually the city was moved from Gammelstad to its current location.

1653 the city burned for the first time. Four years after the move from Gammelstad, half of the buildings were in ruins. As soon as 1657 it burned again.

1762 marks the first major city fire where two thirds of the city burned.

The 1790s marked the start of the mill era with the Selet mill and Melderstein.

1883 Construction of the ore port of Svartön began.

1887 the city burned again.

1888 the first ore train ran from Gällivare to the Luleå ore port. Luleå's most expansive phase began in the 1890s, the population grew by 1,000 percent from 1821 to 1921.

1943 iron ore was made for the first time at the Norrbottens Järnverk mill. The mill needed manpower. There was a major housing shortage.

1955 Shopping, not just Sweden's, but the world's first indoor mall, inaugurated on October 27, 1955.

1971 Luleå University of Technology was established as Sweden's fifth university of technology.

You can find more years and events via the QR code.





Activities & events at the open-air museum Hägnan

CHRISTMAS MARKET

During the second weekend of Advent, the annual Christmas market is held at the open-air museum Hägnan, attracting thousands of visitors. Within the grounds there are traders with tables filled with crafts and goodies. A traditional Christmas market with a guaranteed Christmas atmosphere.

NATIONAL DAY

A popular and festive National Day celebration with music, dance, performances and much else of interest for the whole family.

FOLK MUSIC FESTIVAL

Luleå hembygdsgille invites fiddlers, dancers, singers, listeners, veterans, beginners, young and old to take part in and enjoy wonderful music, dance and of course busking.

MIDSUMMER

A traditional midsummer celebration where we decorate the maypole together. Playing and dancing with Luleå Hebygdsgille. Wreath tying, hay jumping and bread baking. The country store is open, selling coffee, pastries and other goodies.

SUMMER THEATRE

Summer evening in June. The sun is high above the horizon. All of nature is green and blossoming. This means it's an ideal time for the actors of the Norrbotten Theatre to move out to Hägnan, for a summer performance.

At visitgammelstad.se you can find information about the open-air museum Hägnan and about their activities and events.



Midnight light

The best thing about the midnight light is that you can do everything – around the clock. Go swimming, golfing, fishing and socialising outdoors, into the early hours. With the risk that you forget to go to bed...

The midnight sun is a natural phenomenon that occurs during the summer months north of the Arctic Circle, where the sun remains visible even at night. Places south of the Arctic Circle experience midnight twilight, i.e. full daylight even during the night. This is also known as midnight light or white nights.

Starting in mid-March, the northern end of the Earth's axis tilts more and more towards the

sun and reaches its maximum tilt at 23° at the summer solstice. The summer solstice means that the sun reaches its highest position in the sky during the day.

This happens around June 21st. At this point, everything north of the Arctic Circle at 66° N is exposed to sun around the clock. When the earth's axis tilts in the opposite direction during the winter, everything north of the Arctic Circle is

hidden from the sun's rays.

It is easy to assume that this region experiences only darkness or light – total darkness in winter and constant daylight in summer. But in reality, we have light all year round, just in different forms. Some are darker, some lighter and some incredibly colorful. You can experience the midnight sun, or midnight light, in the Norrbotten County.

MAY

JUNE

JULY



The midnight light period spans about 100 days. When the sun practically does not set you have more hours at your disposal. You can go swimming, golfing, fishing or riding well into the early hours. And if you're into photography, these 100 days with no night mean absolutely fantastic conditions – with soft, golden light that lasts for hours.

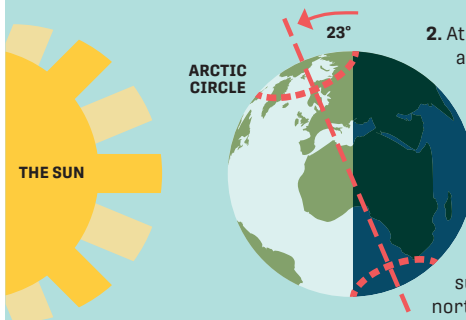
Learn about the midnight sun

What is the midnight sun?

The midnight sun is a natural phenomenon that occurs in the summer months north of the Arctic Circle. It means that the sun remains visible at nighttime. Luleå, located south of the Arctic Circle, experiences midnight light – full daylight even during the night when the sun is not visible.

How it works:

1. During summer, the northern end of the earth's axis tilts increasingly toward the sun, reaching its maximum tilt of 23° at the summer solstice.



2. At this angle everything above the Arctic Circle at 66°N is exposed to sun around the clock.

3. When the axis of the earth tilts the other direction during winter, the sun's rays do not reach north of the Arctic Circle.

The summer solstice

occurs on the day of the year when the sun reaches its highest position in the sky during the day. This happens around:

**JUNE
21**



53

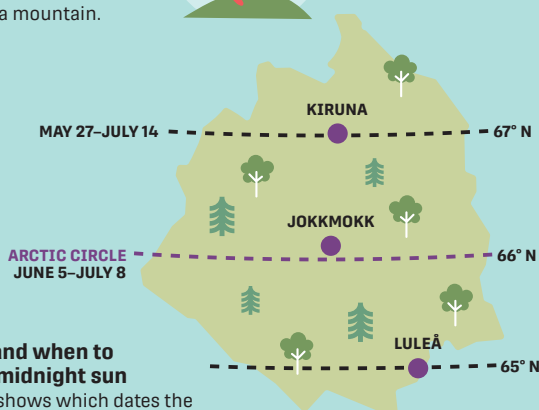
minutes – that's how long Luleå's shortest night is. The sun sets at 00.06 and rises again at 00.59.

What to bring

At night the sun is low in the sky. Wear sunglasses when driving not to get blinded. And don't forget the camera!

Increase your chances

to catch a glimpse of the midnight sun even south of the Arctic Circle by climbing a mountain.



Where and when to see the midnight sun

The map shows which dates the phenomenon is visible. The further up north you travel the longer the period of midnight sun. However, the midnight sun can be seen as much as 90 km south of the Arctic Circle at the summer solstice thanks to atmospheric reflection.

Northern lights

The magical and fabled northern lights, Aurora Borealis, are formed by solar particles from space colliding with parts of the outer atmosphere, and the gusts of the solar winds as they move across the skies. The sparkling light experience in green, blue, purple and sometimes even red then sweeps over the dark evening sky.

The Latin name for the northern lights, Aurora Borealis, roughly translates to 'northerly, red light of dawn', which is quite fitting as the blazes dance across the dark winter sky in everything from green, blue, purple and sometimes even red. In the past, it was believed that the spectacle of the Northern Lights was a sign of higher powers.

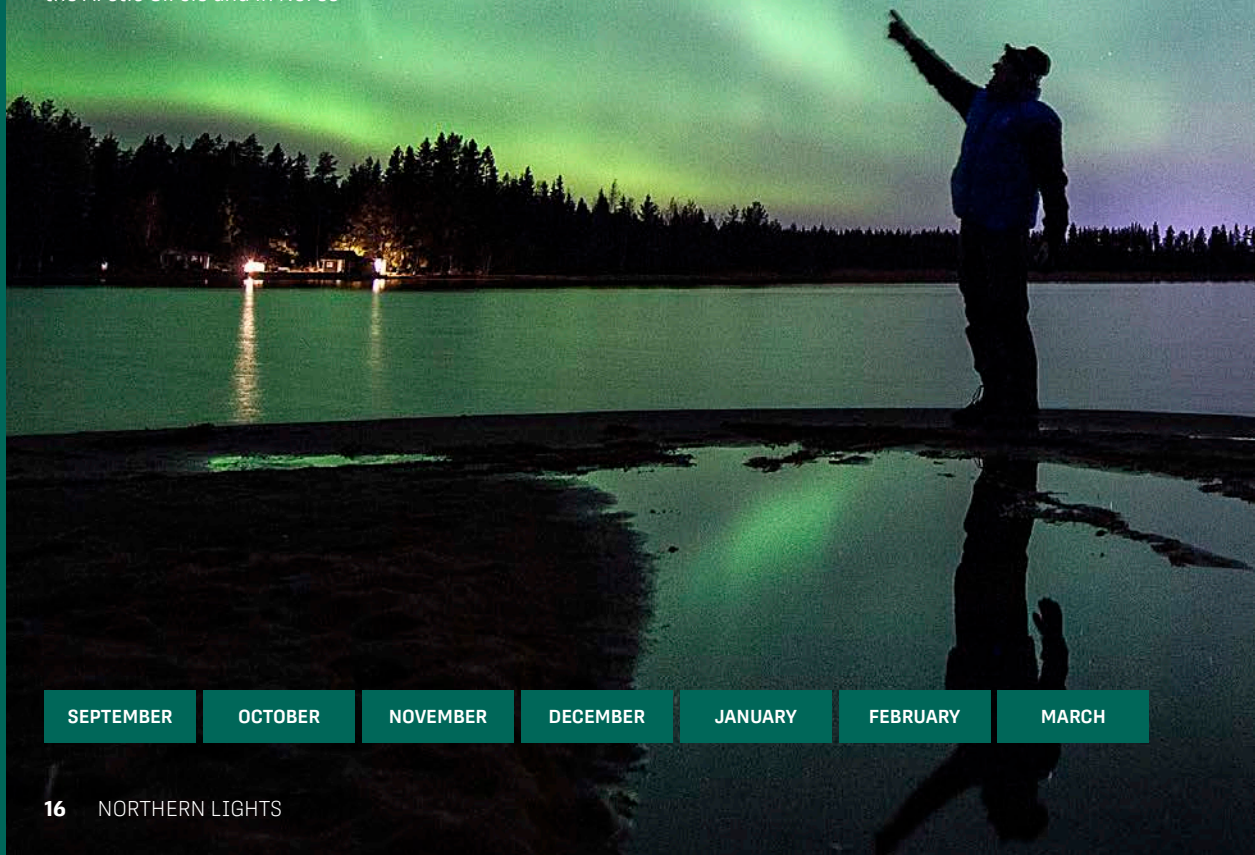
Magical northern lights

The northern lights can be glimpsed over large parts of Europe and associated myths take many different forms. However, it is most common to see the northern lights in the so-called aurora oval above the Arctic Circle and in Norse

mythology it was believed that they were caused by all-father Odin who stood in constant preparation for the battle of Ragnarök. He needed the bravest warriors at his side, and at every battle on earth, Odin chose who would die and accompany him to Valhalla. According to legend, the northern lights were the reflections of the Valkyries, the female warrior people, who led the chosen warriors to Valhalla and Odin's side. Others believed that the northern lights were the last breaths of the fallen warriors or the shimmering bridge Bifrost that led the warriors from the underworld to Valhalla.

For some Sami, the Northern Lights were not about heroism or bravery – they were something to respect and beware of. They believed the northern lights were the souls of the dead and therefore nothing to talk about. Waving, whistling or singing was dangerous as you could be taken to heaven if the lights were alerted to your presence.

Further south, the light often takes on a deep reddish hue, which may explain why the beautiful light phenomenon was associated with bad omens. When the blood-red light made itself known in the night



SEPTEMBER

OCTOBER

NOVEMBER

DECEMBER

JANUARY

FEBRUARY

MARCH

sky, it was interpreted as a harbinger of war and death.

However, not everyone interpreted the northern lights as something ominous. In Denmark, it was believed that the light was created by swans competing to see who could fly the farthest north. In Finland it was believed that light came from fire foxes.

The myth said that as the fire foxes ran, their tails swept up snowflakes which, together with the moonlight, created the aurora.

No matter what, the northern lights have fascinated and inspired people for years.



Conditions for seeing the northern lights

- There must be sufficient solar energy for the aurora borealis to occur in the atmosphere. Additionally, the angle at which the energy hits the atmosphere needs to be right for our location.
- Clear or at mostly clear weather is a prerequisite for being able to see the northern lights. A good rule of thumb: if you can see the stars, it is possible to see the aurora.
- Choose an open, dark location. Avoid areas with artificial lightning as much as possible, although it is sometimes possible to see the northern lights in the middle of town.
- There is no "timetable". The northern lights can appear at any time during the dark hours and may last for varying lengths of time.
- The northern lights can be seen from the end of August to the first days of April. During the rest of the year, it is too bright to be able to distinguish the phenomenon.

Tip!

GOOD PLACES TO SEE THE NORTHERN LIGHTS:

- Gamla malmkajen/Cementakajen
- Gäddvik/Laxfiskemuséet
- Hindersöstallarna
- Karlsvik/First Camp
- Mjölkuddsberget
- Måttsundsbacken
- Ormbergsbacken
- Sinksundet
- The ice track and the ice roads.

DID YOU KNOW THAT...

...the colour of the northern lights depends on the height and speed at which the solar particles collide with the outer atmosphere. Red occurs at the highest altitude and then green, purple and blue closer to Earth.

Learn more about the northern lights at our website visitlulea.se. There you will find information and links to pages and apps with aurora forecasts, map services and scientific descriptions of the Aurora Borealis phenomenon. We also offer advice on how to succeed in photographing the magical light that dances across the sky.

And please... don't forget to dress warmly!





Winter in Luleå

Want to be sure to catch snow, ice, and cold weather? Then you should visit Luleå between mid-December and the end of February. This is also when the city practically doubles in size, as the frozen sea ice of the Bothnian Bay becomes a long-awaited playground – best enjoyed from January well into March.

DEC

JANUARY

FEBRUARY

The famous 10+ kilometre ice track, which is ploughed as soon as the ice is thick enough, runs between Luleå's north and south harbours. It is a natural place for walking, kick-sledding, winter cycling, skating and jogging – and both locals and tourists stop for selfies by the large Luleå signs at each harbour.

In February, the annual Schaatsen skating competition is organised by the Dutch Skating Association, and the ice track becomes a second home for hundreds of Dutch skaters.

The ice roads, strong enough for cars, add to the feeling that the archipelago and the city are intertwined, and offer exotic car rides through a white landscape.

During this darkest season, especially in December, the Christmas lights sparkle around the city and when the grand Christmas tree is raised on Storgatan, it marks the first Advent weekend and the season of warm drinks in cosy

cafés around town.

Winter is also the season for national basketball and ice hockey leagues, drawing both locals and visitors to Luleå Energi Arena and Coop Arena. The city also offers a rich program of concerts and theatre performances during this time.

But be prepared – visiting our beautiful winter city means dressing properly for the cold and wind. Layering is key, as temperatures can drop to -35°C.

It is also about capturing the daylight, which is rare at this time of year. The sun sets as early as just after one o'clock on December days.

But that hardly matters when the dark, clear nights are occasionally lit up by the magical northern lights – the Aurora Borealis.

We extend a warm welcome to experience winter in Luleå, we believe you will love it.



Temperature: 0 to -35°C



Weather: Cold in clear weather, in precipitation snowfall.



Daylight: 4–12 hours.

Winter activities

You can find more information about the activities, more tips and information about where you can rent equipment and book guided tours at visitlulea.se.



Photo: Burban Studios

Put on your skates

Where, if not Luleå, would you go to skate on natural ice? Every year, an ice track is ploughed around the central peninsula from the north harbour around Gültzaudden, to the south harbour and on to the small island of Gråsjälören. In addition, sometimes detours are made to Bergnäset and Mjölkudden. The total length is usually around 10 kilometres.



Photo: Therese Hedman

Go snowmobiling

Whether you choose to go out on your own or on a guided tour in the frozen archipelago or through the forest, the snowmobile is an excellent means of transport in winter. You travel light and fast and you get really close to nature. We recommend bringing a packed lunch and hot drink. And remember to follow the designated snowmobile trails!



Photo: Fredrik Broman

Experience dog sledding

Would you like to experience speed and excitement with the muffled sound of paws and runners against snow? Then try dog sledding and feel how you almost blend into the winter landscape. In some cases, it is also possible to try mushing the sled yourself!



Photo: Olov Stenlund

Cycling on the ice

In the summer we cycle on our archipelago islands and during the winter it is also possible to cycle between the islands using a fatbike. The wide and durable tyres allow you to go cycling on the ice, to the farthest edge of the archipelago. If you're lucky, you'll see the northern lights and winter-grazing reindeer all around you on the islands off Luleå.



Go downhill on slopes

Just outside the city, you'll find Ormberget – a smaller slope for downhill skiing if you want a fair challenge. If you wish to test your limits, Måttsundsbacken outside Luleå is a better option – where you can also rent equipment on site.



Photo: Per Lundström

Travel by kick sled

Once the ice track is ploughed, head to the kick sled statuis at either harbour and borrow a sled free of charge. Why not head out to the small island of Gråsjälören? Another suitable kick sled trip is to go from the south to the north harbour, where there are restaurants serving both lunch and dinner nearby.



Try cross-country skis

Experiencing nature whilst gliding on cross-country skis, almost without a sound, at a fast or a slow pace, is just part of everyday life for many people living in Luleå. Illuminated tracks let you ski even when it's dark outside. The most extensive trail system is found on Ormberget. There are tracks for both beginners, hobbyists working out and pros. Track lengths vary between 1.5 and 10 kilometres.



Hike with snowshoes

It's truly lovely to make your way through snow-filled terrain, even where the snow is really deep, without sinking. Although they are called snowshoes, they are not shoes that you put on, but a kind of frame that you strap onto your own winter boots. A tip is to have trousers with snow zippers or drawstrings at the bottom so you really keep the snow out of the boot shafts.



Photo: Ida Lundh

Experience Sámi culture

At Dálvvás, Marita Sikku made her dream come true – a place where people can experience Sámi culture, reindeer, and storytelling by the fire. A warm and authentic winter experience. Marita Sikku traded the classroom for a lávvu and reindeer. In Karlsвик, she now runs Dálvvás – a place where the dream of entrepreneurship and Sámi culture come together in a winter landscape.

Tip!

PHOTOGRAPH THE NORTHERN LIGHTS

We recommend a tripod to avoid blurry pictures. If you don't have access to a tripod, you can stabilise the camera with a rock or a piece of wood. When photographing with a mobile phone camera, the basic tip is to choose night mode, otherwise you risk getting shutter speeds that are too short.



Photo: Ida Lundh

Step into an ice bath

Stepping into a hole in the ice is described by many as a powerful experience that leaves you yearning for more and gives an indescribable energy boost. The best way to try an ice bath for the first time is to book an instructor who will guide you through the ritual, step by step, under safe conditions. You usually start by warming in a sauna and then step down into the water.

✓ BUCKETLIST

- ☐ Ice skates
- ☐ Snowmobile
- ☐ Dog sledding
- ☐ Cycling on the ice
- ☐ Downhill skiing
- ☐ Kick sled
- ☐ Cross-country skis
- ☐ Snowshoes
- ☐ Northern lights
- ☐ Ice bath

DID YOU KNOW THAT...

...Luleå's frozen archipelago and ice roads are listed as place number 45 on the American news channel CNN's "bucket list" of the 50 most astonishing nature experiences?!

Facts



Photo: Burban Studios

THIS IS WHY THE SEA FREEZES

The Gulf of Bothnia has brackish water, a mixture of freshwater and salt-water. The reason behind this is that eight major rivers flow out into the gulf. The Gulf of Bothnia is estimated to be approx. 4/5 parts freshwater, making it the most freshwater-diluted sea water area in the world. That is why the sea freezes here every year. When the ice has grown to about 40 cm thick, the 6-tonne machines can start ploughing the ice track around the city centre, from the north to the south harbour.



Photo: Per Lundström

In Luleå in winter, you can see the large icebreakers Ale, Atle, Frej, Idun, Oden and Ymer parked, awaiting their tasks of keeping an open channel in the ice for incoming transport ships. In the municipalities Kalix and Piteå, icebreaker tours are organised, where you have the opportunity to take a dip in the icy water wearing a survival suit.



THE ICE TRACK IS POPULAR AMONG LULEÅ'S LOCALS, FOR WALKS, KICK-SLEDDING, WINTER CYCLING AND ICE SKATING.



The ice track

Every year, an ice track is ploughed from the north harbour, around Göltauudden, to the south harbour and further out to the island of Gräsälören. In recent years, side tracks across the river to Bergnäset, and inwards on the river towards Mjöludden, have also been ploughed. Points of entry to the ice track can be found at the north harbour, near Hälsans Hus, as well as at the south harbour. The Hälsans Hus entry point is accessible to disabled visitors. Generally, the ice track opens to visitors in late December.

The length and layout of the ice track varies from year to year. The total length is usually about 10 km. There are evenly spaced rest stops along the track, to stop for snacks and beverages, or to make a fire, sheltered from the wind. In addition to ice skating and kick sledding, the ice track is also suitable for walking or jogging. The sides of the ice track are left unpolished, to make them less slippery for walking. The ice track is always ploughed to Gräsälören, where the local Lions association sells waffles in early spring.



The ice roads

Driving a car out onto the sea ice, into the archipelago or on the frozen river may sound unreal to many. A French news channel described the roads on the frozen Gulf of Bothnia as "a universe of snow and silence, like a huge desert of ice." For Luleå locals, however, it is something completely natural to travel by car on frozen water during large parts of the winter. When the ice along the coast outside Luleå is about half a metre thick, about 30 kilometres of ice roads are ploughed, to a couple of the islands in the Luleå archipelago.

Driving on the ice is risk-free if you stay within the ploughed roads. The load-bearing capacity of the ice is carefully checked with test drills. Normally, the ice roads open in January or early February, depending on weather and temperature. Clear signage indicates if the ice roads are temporarily closed and when the season is over. Be aware that speed is limited. Feel free to take a day trip with your own car and visit, for example, the islands Hinderö, Sandön and Junkön.





Photo: Per Lundström

Tip!

DRESS PROPERLY AND STAY WARM

It is important to dress correctly, especially during physical activity. Think layer upon layer and use wool or other material that keeps you dry closest to your body. A warm down jacket as an outer layer is nice in a sharp cold. Don't forget warm shoes, gloves and a hat. A seat pad is necessary when it's time to enjoy your packed lunch. A hot drink in a thermos is perfect to warm up from the inside.



DID YOU KNOW THAT...

...The Lovikka mitten was created in 1892 by Erika Aittamaa in the village of Lovikka. Today, you can find woollen mittens and other handcrafted products, among other things, at the Lapland Heartwork store in Luleå.

IN THE LULEÅ ARCHIPELAGO, WITH 1,312 ISLANDS, MANY DOZEN KILOMETRES OF WINTER ROADS ARE PLOUGHED, A SERVICE FOR BOTH RESIDENTS AND VISITORS.



Photo: Peter Rosén

WINTER RECORD

-41

In 1999, thermometers showed -41°C in Luleå. The Swedish record is -52°C.

113

In 2015, the snow depth was measured at 113 cm, thus breaking the record from 1966.

16 481

Luleå municipality has the highest number of registered snowmobiles in Sweden. In 2024, there were 16,481 of them.

Winter events

Snow, ice and cold make for outdoor events in Luleå. Theatre in the city park, Christmas markets and international skating competitions are organised here, among many other things. Keep an eye on visitlulea.se. visitlulea.se.



The Advent calendar in stadsparken

On December 1, something happens that the locals look forward to every year. The opening of the Advent calendar in stadsparken (Luleå's city park). The show – which is new every year – with theatre, song and music is performed every day until Christmas Eve. Lule Stassteater started the Christmas calendar tradition back in 1995 and it has become a must for the whole family.



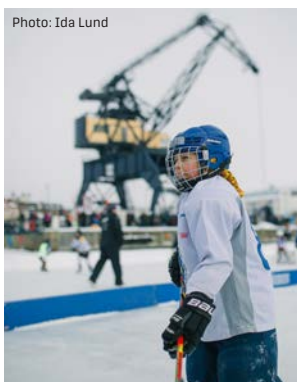
Schaatsen Luleå – an international skating competition

Every year in February since 2017, we welcome hundreds of skaters to the ice track encircling central Luleå. They come here to take part in Schaatsen Luleå, a skating competition in the marathon category where natural ice is the prerequisite. Organised by the Dutch Skating Association, the competition consists of a series of races spanning between 30 and 200 kilometres. Grand Prix for the professional skaters and Sea Ice Classic for the amateur skaters. Watch a short film and be inspired to glide out on the ice yourself.



The festival Luleå On Ice

Luleå council holds a festival at Södra hamnplan and the ice track, during a weekend in February. The event attracts large numbers of visitors to the area, where activities such as dog sledding and trying out curling coincide with the Winter Classic – an ice hockey tournament for the younger children, sales of food and locally produced crafts, and snow sculptures created by Sunderbyn community college.





Sea Ice Marathon

In February/March, runners from all over the world gather to take part in the Sea Ice Marathon, which takes place on the ice track surrounding central Luleå. Participants can choose to run 42 km, 21 km, 10 km, or 5 km on natural ice. The marathon is part of the program for the Schaatsen Luleå event, organized in collaboration with the local company Explore Luleå. The Sea Ice Marathon is a popular race that attracts runners from across the globe. In 2025, nearly 600 participants from 33 countries lined up at the start! Watch the short film and experience what it's like to run on ice.



Photo: Therese Hedman



Photo: Therese Hedman

Traditional Christmas market

During the second weekend of Advent, the annual Christmas market is held, attracting thousands of visitors to the open-air museum Hågnan, adjacent to the world heritage site of Gammelstad's church town. The Advent candles shine through the old windows of the church cottages, the mediaeval stone church comes to life and the market traders are ready to greet visitors with tables filled with crafts and goodies. Go on a sleigh ride with a horse in a wintry, beautiful church town and take the opportunity to say Merry Christmas to Santa Claus and reindeer who are visiting during the market weekend. Welcome to a traditional Christmas market with a guaranteed Christmas atmosphere.



Photo: Therese Hedman

Try the kicksled!

Look for a kicksled on one of the ice track's "kicksled parkings" and take a trip out to Gråsjälören or go from harbour to harbour. Here you will also find "smart" kicksleds that are equipped with sensors that collect information about position, accessibility and distance. For each kilometre the kicksleds move, SEK 1 is donated by the company Lunet, which provides Luleå with digital infrastructure, to the children's ward at Sunderby hospital.

KICKSLEDS
ARE AVAILABLE
TO BORROW FOR FREE
AT ANY OF THE
KICKSLED PARKING
AREAS AROUND
THE ICE TRACK.



Local modes of transportation

Pulk/sled

Use:

Pulled by someone or something.
Used either for cargo or for people.
Also used for fun on downhill slopes.

Pros:

Helps you to easily pull things over snow and ice.
Fun downhill.

Cons:

There are many different types of pulks. The smaller plastic ones are often fragile and the larger ones tend to be cumbersome.

Difficulty: Few difficulties.



Snowshoes

Use: Second to none if you, like Jesus, would like to walk on (frozen) water in winter. Snowshoes give you the best possible way to move across snow and ice.

Pros: Deep snow will be no obstacle to your exploration of the outdoors.

Cons: Takes a heavier toll on your leg muscles than one might think. Be prepared to become exhausted.

Difficulty: Requires a slightly odd walking technique, very different from your normal walk. A minor obstacle, however, very easy to learn.

Kicksled

Use:

For short or slightly longer transportation over ice or densely packed snow.

Pros: Suitable for two people.

Cons: Requires a hard, wintery surface. Does not work on gravel.

Difficulty: With basic balancing abilities you'll be just fine.



Snow slider

Use:

Hunting for adrenaline rushes on steep slopes.

Pros:

Easy to carry.

Cons:

Difficult to steer.
Some chance of pain in the rear end.

Difficulty:

Actually staying on the slider all the way down the slope.



Toboggan

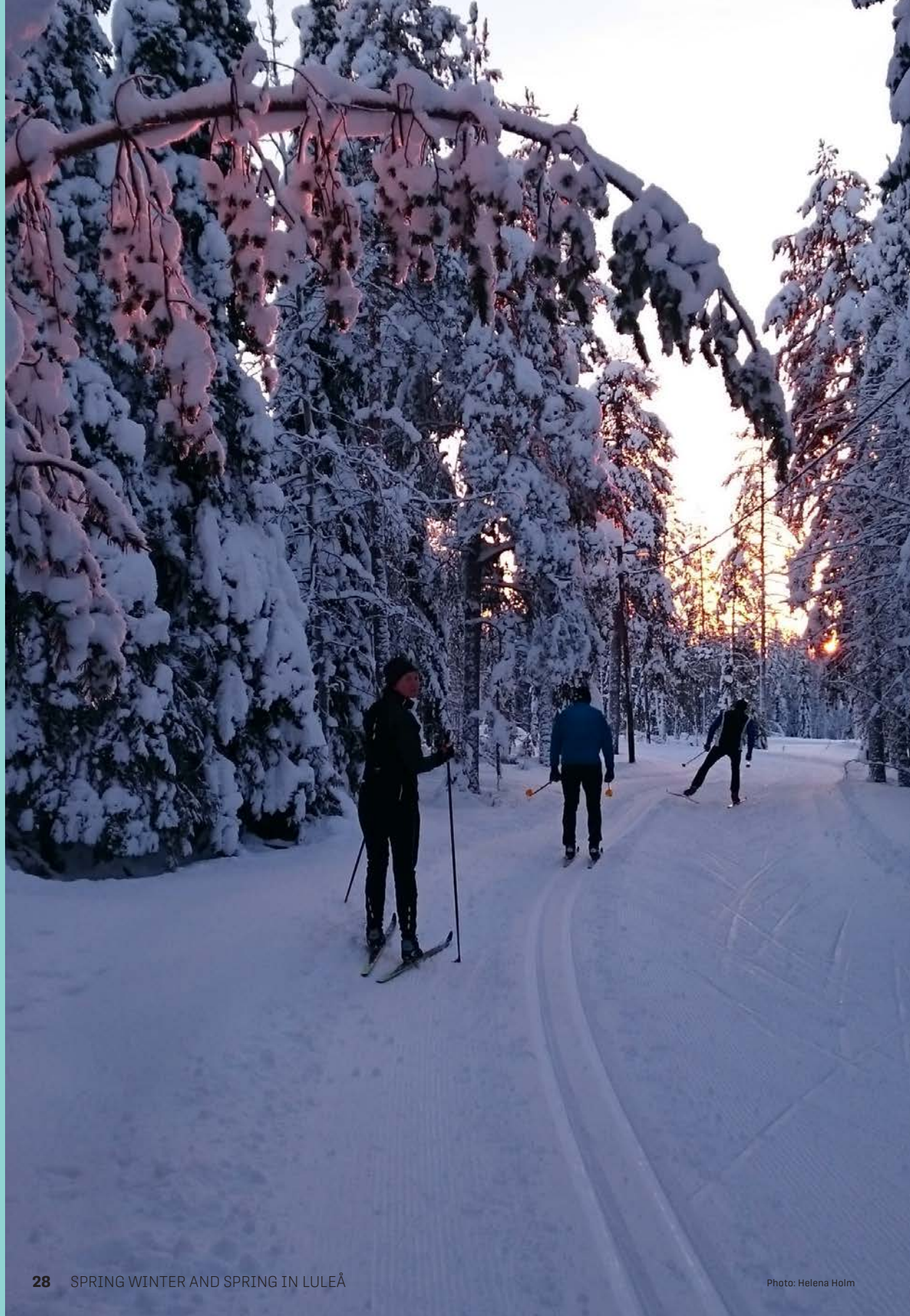
Use:

Transport for children, fun downhill toy.

Pros: Steerable, usable for getting children from point A to point B.

Cons: Goes downhill very quickly and is not optimised for safety. Use a helmet!

Difficulty: Steering the toboggan at high speed is very difficult. Be careful if you're not experienced.



Spring winter and spring

Are you looking for a perfect combination of sunshine, snow and winter sports? Then you should visit the city in March or April. By the wide smiles and the many people milling about, you can be sure that spring winter has arrived.

MARCH

This season, unique to the northernmost parts of Scandinavia, is when locals truly embrace life on the ice, ski trails and the downhill slopes, even more than usual.

This period is characterised by long bright days and a sun that warms your back. The lovely smell of crackling fires, boiling coffee and sausages spreads along the ice and up the ski slopes as many gather around the fire pits. In nature, birdsong is heard again and the snow is starting to drop from the rooftops.

At the end of April, Walpurgis night is celebrated with bonfires and if you love bargains, you will not be disappointed as the flea markets, particularly the annual Arcus Bargain Market, which also attracts visitors from our neighbouring countries, offer everything from antiques to clothes.

APRIL

When the snow finally melts away in late May, the popular Stadsmaran running race is held, fun for both spectators and participants. Don't miss it!

During the Easter weekend, the city can feel quiet as many locals head to their cabins or the mountains. Shops and restaurants in central Luleå are often closed on Easter Sunday.

There is a good reason why people talk about "April weather" – a single day can bring snow, rain, strong winds, brilliant sunshine and freezing temperatures. We recommend dressing in layers so you can adapt to the changeable weather. Don't forget to pack sunglasses, a cap and sunscreen, as the sun's rays are reflected off the snow.

Welcome to the spring winter in Luleå!

MAY



Temperature: March -20 to +5°C, May 0 till +20°C.



Weather: Mostly dry weather.



Day light: 12–24 hours.



BARBECUE SPOTS

Cook outdoors and cosy up by the warmth of the fire. Information about public barbecue areas in Luleå is available on Luleå's municipal map (link via QR code). Here you can also see where firewood is provided, and where you need to bring your own.



WHEN THE FLAG IS HOISTED, THEY ARE OPEN FOR BUSINESS

Gråsjälören is a small island a stone's throw from Luleå's south harbour. During the winter, an ice track leading here is ploughed from Södra hamnplan. The island is a favourite among locals and tourists alike. During the winter, the charity association Lions offers hot dogs, waffles and coffee, among other things. There is also a heated cabin where you can go inside. You know they are open when you see the flag raised. If you want to bring your own packed lunch, there is firewood and barbecue areas to use.



Go for an outing



Photo: Per Lundström

Meet moose and reindeer

At Cape Wild, Dálvvás, and Brändön Lodge, a magical encounter awaits with some of Scandinavia's most fascinating animals – moose and reindeer. Here, you'll have the chance to come face to face with the moose, the "King of the Forest," and feed it directly from your hand with apples, carrots, or bananas – a powerful and unforgettable experience. Don't forget to book your visit. You'll find more information on the companies' websites.



N.B.!
IMPORTANT:
WALKING
THE SKI TRAILS
IS PROHIBITED.

Photo: Jonas Järnerby

Visit Ormberget for outdoor sports

Ormberget is a place well worth a visit, winter or summer. The view over Luleå is fantastic and it is a classic spot to experience the northern lights. Here you will find a ski slope, a toboggan run, an extensive exercise trail system with lighting, prepared for cross-country skiing in winter, adventure trails, a restaurant, an amenities cabin for exercisers, barbecue areas, etc.





READ UP ON
CURRENT FISHING
RULES. MOST FISHING
LICENCES FOR THE
LULEÅ AREA CAN BE
PURCHASED AT
ifiske.se.

Try ice fishing

From Luleå's north and south harbours, when the rays of the spring winter sun are warming, you can see people sitting on reindeer hides or riding kick sleds out on the ice of the city's waters for hours on end. What are they doing out there? "Pimpling"! Pimpla is a Swedish word for ice fishing. By drilling a hole in the frozen water, they can reach the fish below. You can also try ice fishing/pimpling with a guide.

Here's where the fish bite

Nice places for winter fishing in Luleå, in addition to the north and south harbours. For example: Björköfjärden, Furufjärden, Strapösundet, Hertsöträsket, Örnabben and Stora Stenträsket.



THREE FISH YOU HAVE A CHANCE OF CATCHING



Salmon

(salmo salar)

A luxurious kind of game fish. A challenge for the fisherman, as the salmon is strong and persistent.



Pike

(esox lucius)

The fish considered a delicacy by some and an awful creature by others. Large fish that will put up a fight, tasty if prepared in the right way.



Perch

(perca fluviatilis)

Probably the most common fish in the Luleå region. Flavour-some fish, a classic delicacy amongst the locals. Tastes best when you catch and prepare it yourself.

Illustrationer: Lisa Wallin

COTTAGES IN THE ARCHIELAGO



■ Stay in a cottage at **Brändö Lodge**. Here you will sleep in well-equipped cottages for four people, all with a view of the frozen sea. The cottages have a sofa bed, WC, shower, TV and kitchen with fridge/freezer. There are also pitches for mobile homes in the summer.



■ **Luleå council** rents out self-catering cottages on the islands of Brändöskär, Kluntarna and Småskär even during the winter. The cottages have four to eight beds, a gas fridge and stove and are heated by a wood stove. The cabins are booked online and the journey there is a real adventure. When ice conditions are good, we recommend skiing here.

Tip!

TAKE A REFRESHING WALK

Luleå is a good city for walking. You can walk along the central peninsula from Gultzaudden to the south harbour and towards the city centre via the street Kungsgatan. And of course along the ice track towards the small island of Gråsjälören or from harbour to harbour.

More information about the activities, tips, rent equipment and book guided tours – see visittulea.se.



Tip!

BIRD WATCHING



Photo: Per Lundström

Are you feeling watched? The majestic great grey owl flies almost unnoticed from branch to branch, despite its size, and spots you long before you spot it.

OUR TOP 10 TIPS ON LOOKOUT PLACES:

- The fields at Alvik
- Ersnäsfjärden
- Hertsöfjärden
- Gammelstadsviken
- Mjökuddstjärnen
- Persöfjärden
- Likskärsbanken
- Kallax strandängar (beach meadows)
- Rödkallen
- Kluntarna

GAMMELSTADSVIKEN

A few hundred years ago, Gammelstadsviken was a bay. Here the cargo ships entered Luleå harbour, which was then located beneath the Gammelstad church town.

Today Gammelstadsviken is a lake with a rich population of birds. You have to travel almost 1,000 kilometres south to experience a similar fauna. A small selection of the bay regulars include whooper swans, ospreys, robins, and hazel grouse. There are also opportunities to see the great sea eagle here. You can easily find your way here from the open-air museum Hägnan car park, where a nice path with footbridges offers an easy hike.



When the snow has melted...

...there is a lot to discover and explore around Luleå, on your own. For those of you who wish to hike, cycle, paddle and fish, we have put together a selection of our favourite places and routes in thematic guides and we hope that you will like these places as much as we do.

Cycling in Luleå

In this guide, you'll find everything from simpler bicycle trips to interesting full-day rides that require more time and cycling experience.

- Tour of the bridges
- Gammelstad Church Town
- Selets bruk (The Selet Mill)
- Tour of Fjärdarna
- Allotment gardens and a taste of the sea
- Svartöstaden and the icebreakers
- Kallax by and Kallax gårdsbutik (farm shop)
- Going for a swim in Lulviken
- Archipelago adventures on Sandön
- Mountainbike trails
- The art route



Hiking in Luleå

This guide describes walking tours in Luleå. Everything from simpler tours that suit all ages to more challenging hikes that take you further out into our beautiful environment.

- Hertsöleden
- Gammelstadsviken
- Fäbodaleden
- Hemberget
- Kluntarna
- Småskär
- Jämtön
- Vitån
- Bälingeberget
- Walks in Luleå

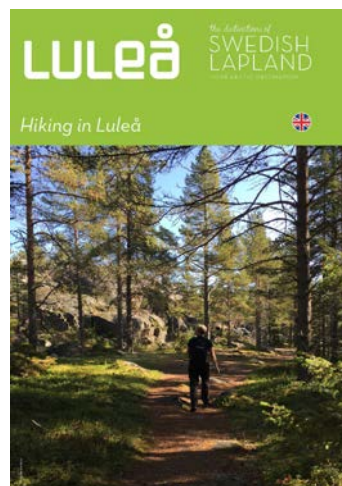


Photo: Per Bergbom

At visitlulea.se you can find more information, practical tips and suggestions for more tours. You can also download our guides in pdf format. The guides can also be picked up at the Luleå tourist center.



Fishing in Luleå

There are many places to fish in Luleå. Here there are rivers with rapids and calm stretches, lakes with introduced fish and sea fishing. The most common species are salmon, pike and perch. In this guide, we will take you through many different fishing spots as well as:

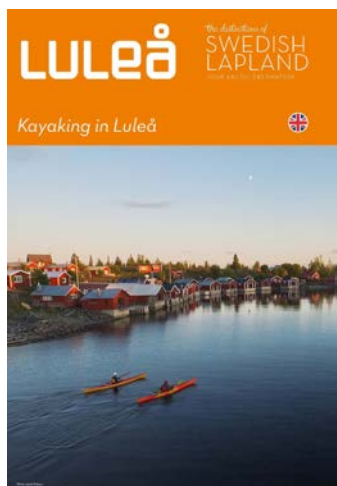
- Luleå archipelago
- Lule river
- Råne river
- Hertsöträsket and Metträsket
- Stora Stenträsket
- Mittitjärn and Hovlössjön



Kayaking in Luleå

The guide describes kayaking trips around Luleå and Råneå of varying difficulty, all of which lead to beautiful and exciting islands.

- Alhamn till Antnäs-Börstskär
- Kallax-Ersnäs-fjärden
- Near central Luleå
- Sandgrönnorna
- The central archipelago
- The outer archipelago
- The northern archipelago
- Around Brändön
- The Råneå archipelago
- Around Rånefjärden
- Bathing at Alskär



WITH THE RIGHT CLOTHES, YOU CAN START THE SEASON BEFORE THE ICE IS GONE.



Photo: Niilo Alhoavaara

Animals and nature come to life



In addition to deciduous trees and flowers budding and blooming in the spring, bears, badgers, dormice, hedgehogs and some snakes that have been hibernating during the cold months are waking up. However, most of these are difficult to see as they are shy or downright dangerous.

Other wild animals in the forests of Luleå, which stay awake all year round, include elk, reindeer, foxes, hares and squirrels. Less visible are otters, martens, lynxes and wolverines.

If you're really lucky, during your visit to Luleå you may see reindeer even on your way from the airport. Or an elk! From time to time, the elk also wander into town, mainly in winter via the ice around the city centre.

In summer, sea eagles often appear and you can see them at Furufjärden and Gammelstadsviken. And of course in the sky where they make a mighty sight.

One animal that you can come across in the Luleå archipelago is the grey seal. The surest place to find them is on the waters east of Småskär.





Summer in Luleå

Do you want to experience endless days that seamlessly blend into bright nights? Enjoy beach and archipelago life or spend late evenings at outdoor restaurants? Then you should visit Luleå between June and August. Nature is green, the air is fresh and the clear water glistens around the city.

JUNE

JULY

AUGUST

June is characterised by the famous midnight light, when the nights are almost as bright as the days. It's a magical time when you can watch the sun set one moment and see it rise again just minutes later.

The summer months in Luleå offer countless experiences, with the beautiful light as your constant companion. How about trying midnight golf? Spending time in the archipelago? Climbing, go-karting and paddling are some of the activities you can try. You can also troll along the harbour promenades, swim in the sea, go bird-watching, or try your luck at fishing. If you are near the shopping streets when the sun is at its highest – take the op-

portunity to shop and enjoy lunch under a parasols at one of the many outdoor restaurants.

Several music festivals and large concerts are held in Luleå and you can hear live music throughout the summer. Don't miss the summer concerts in various genres at our churches. Those looking for a bargain have lots of flea markets and summer auctions to visit.

In addition to sunscreen and a sun hat, it is wise to pack an eye mask for sleep. Because it is really light even at night. Warmer clothes can also be good to have, the wind is strong even on some summer days.

Come and experience summer in Luleå!



Temperature: +5 to +30°C.



Weather: Coastal weather which often provides many hours of sunshine. Coolest at the beginning of summer.



Day light: 24–15 hours.

Summer activities

You can find more information about the activities, more tips and information about where you can rent equipment and book guided tours at visitlulea.se.



Visit a world heritage site

The Gammelstad church town is included on UNESCO's world heritage list of places worth preserving. This was the site of Luleå's original town centre until 1649. The area with over 400 church cottages is lovely to stroll through. Take a look at the late mediaeval church from 1492 which is still in use and popular for weddings. Peek inside the Gammelstad Visitor Center where you will find an exhibition and souvenir shop that also has local goodies. At the open-air museum Hägnan, you can book a guided tour to learn more about what life was like in the olden days. Visit the Fägnan café and the country store, and enjoy the old-fashioned interiors of both. Hägnan is also the site of the traditional Midsummer celebrations, gathering thousands of locals and tourists.

Photo: Peter Rosén



Photo: Håkan Stenlund

Go on a shrimp cruise

Enjoy shrimp whilst listening to troubadours playing and singing during a three-hour evening cruise in Luleå's beautiful archipelago. The skipper always chooses a suitable route with weather and wind in mind. The shrimp cruises run throughout the season from June to the end of September.

Photo: Per Lundström



Rent a sauna raft

A sauna raft is much more than just a sauna. It's a lovely way to spend time with family and friends. Sweat in the heat from the wood-fired sauna, take a dip in the sea, cool off with a cold drink on the sun deck, light the grill and look out over the beautiful scenery of Luleå city.



Photo: Tomas Bergman

Climb up Snipen

A couple dozen kilometres north of Luleå near the village of Niemisel, you'll find climbing for everyone, to use a well-worn cliché – but it really is true here. The mountain Snipen offers dramatic climbing and the trails are considered some of Sweden's most difficult. From the top of the cliff you can enjoy the view of the Råne river valley.



Photo: Ted Logart

Get around on two wheels

If you enjoy mountain biking, visit Ormberget, where signposted trails take you out into the terrain. Choose between different lengths and degrees of difficulty. The trails are varied with cycling on dirt roads, exercise tracks and paths. There is also a downhill course here. At the top lies a lunch restaurant.



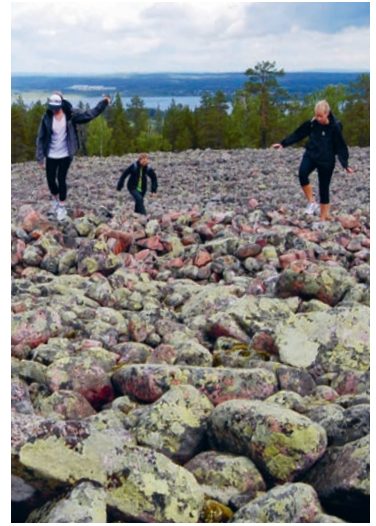
Play golf around the clock

Luleå has Sweden's northernmost 27-hole course – probably one of the golf courses with the best lighting conditions in the world. The midnight light in Luleå means that you can even play a round in the middle of the night. All necessary equipment and golf carts can be rented on site. The course usually opens on the last weekend in May and usually closes at the end of October. Here you can also eat well at the Rutvik Golf restaurant.



Paddle between 1,312 islands

The summer nights with midnight light in the Luleå archipelago mean that you don't have to rush to your port for the night, but can paddle around the clock. The Luleå archipelago is part of the Bothnian archipelago and is the world's northernmost brackish water archipelago. It's neither saltwater nor freshwater, and this has affected both flora and fauna. In the Luleå archipelago there are 1,312 islands with varying characteristics. On some islands you can enjoy a sauna, stay in a cabin or eat at a restaurant. But for those who instead wish to experience solitude, there are many islands and beaches without jetties, cottages or other facilities.



Hike on Bälungeberget

Bälungeberget is a popular hiking destination. From the top of the 139 metre high mountain you have a view of the Lule River landscape. The higher parts of the mountain have extensive fields of shingle and water-sorted gravel. Sparse pine forests grow on outcrops eroded by the sea, where the ancient trees can be 400 years old. Up on the mountain there are picnic areas. Bring some firewood if you want to be sure that you can make a fire.

Tip!

An easy way to improve safety when embarking on an adventure is to share the experience with others. It also makes it more fun.

✓ BUCKETLIST

- ☐ World heritage
- ☐ Shrimp cruise
- ☐ Sauna raft
- ☐ Climbing
- ☐ Terrain cycling
- ☐ Golf in midnight light
- ☐ Paddling
- ☐ Bälungeberget



3 THINGS YOU SHOULD KNOW BEFORE YOU GO PADDLING IN THE LULEÅ ARCHIPELAGO

1. The Luleå archipelago is relatively shallow, the average depth is approximately 10 metres. This means choppy seas (short, steep waves) when the wind picks up. It also means that shallows and rocks can be found in the middle of a large inlet.

2. The water level is affected by air pressure and winds. The difference between high and low tide can be as great as 2 metres.

3. In summer, southerly and south-westerly winds are the most common, and all crossings in the archipelago are more or less affected by these wind directions. The nights are bright and mostly calm so if it's windy during the day you can paddle at night instead.

Tip!

Check out our guide "Paddle in Luleå" for suggestions for tours for both beginners and experienced paddlers. The guide contains maps and descriptions of the tours as well as information and practical tips to make your paddling experience smoother.



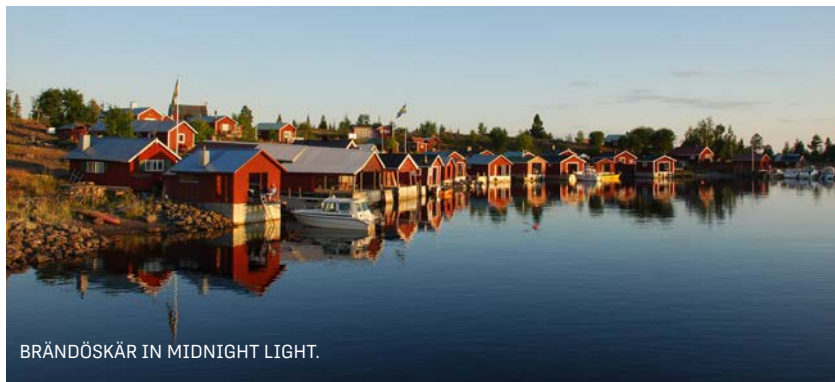
Take the boat out into the archipelago

Visit Luleå's beautiful archipelago - moor your own boat, go on a themed cruise, stay overnight, go island hopping and swimming in the sea.

There are regular, comfortable services to the larger islands, you will find Stella Marina and M/S Symfoni docked at the south harbour. At Sandön is the popular Klubbviken, which has two completely different sides: one easy and idyllic, with sandy beaches, a restaurant and fun activities, one untouched and facing the sea. With a tour boat, you can also go further out into the archipelago, to Kluntarna, Småskär, Brändöskär, Hindersön and Junkön – islands that have been inhabited for hundreds of years, among other places. What remains are fishermen's cabins, lighthouse keeper's stations, pilot's cabins, lighthouses and log chapels.

With your own boat, you can moor at one of Luleå's guest harbours or you can choose a natural harbour and have an entire island to yourself. The archipelagic environment is wild but at the same time flat, easily accessible and safe for children. Take your children beach-hopping and hiking on the islands. Fall asleep and wake up in a tent or an archipelago cabin to the sound of seabirds, waves and wind. Day trip or archipelago cruise – experience the Luleå archipelago your way.

More information, tips and itinerary for the archipelago boats can be found via visitlulea.se/skargard and at the Luleå tourist center in Kulturens hus.



BRÄNDÖSKÄR IN MIDNIGHT LIGHT.



6 islands to visit

SANDÖN

The largest island in the archipelago. Here is Klubbviken with its long sandy beaches. This is where you go if you would like to swim, have a coffee and some snacks or food, or enjoy an evening of entertainment. We can also recommend taking the island's walking path to visit the shingle field at Lappmyrberget. Here there are not only cabins and saunas to rent, but also showers and saunas that are open to the public.

HINDERSÖN

Hindersön is one of the larger islands in the Luleå archipelago. As early as the 16th century, people lived here, making a living from fishing, farming and sealing. The island had both an iron ore mine at the end of the 19th century and lime and marble mining at the beginning of the 20th century. Sauna available.

BRÄNDÖSKÄR

Brändöskär is located on the outer rim of the archipelago, known for its fishing village, chapel and the statue of Christ by the artist Erik Marklund. Here, boat-houses picturesquely line the shore, while the island's cabins are located up on the mountain. There are cabins to rent here. Sauna available.

SMÅSKÄR

The island's fishing camp has long played an important role in Luleå's history and has existed since the 16th century. There are several smaller swimming beaches here and also a rich bird life. Some 40 breeding bird species and grey seals are often visible to the west of the island. The chapel on Småskär was built in the 1720's and is the oldest in the Luleå archipelago. There are cabins to rent as well as a sauna here.

KLUNTARNA

The Luleå locals' favourite in the archipelago. Here you can experience different environments on lovely walking trails. Near the Victoria rock, known colloquially as Kluntgubben (the Kluntarna Man), there are plots from the island's very first fishing camp. Don't miss the labyrinths, the shingle fields and the old harbour either. The island has cabins for overnight stays and sauna facilities as well as a nice harbour where you can moor your own boat.

JUNKÖN

This island is known for its archipelago museum and gallery. Another attraction is the windmill from the 18th century. On the island there are rental cabins, a sauna and a café open in summer.

The names of the islands in the Bothnian archipelago are rooted in old dialects and their meaning is not always obvious today. Flora, fauna, personal names and the nature of the islands have often given the islands their names.



Photo: Viveka Österman

COTTAGES IN THE ARCHIPELAGO

■ At Klubbviken Havsbad you can rent a two-bed cabin with access to a WC and shower in nearby amenities buildings or you can choose a four-bed cottage furnished with its own kitchen and bathroom. All cottages are rented out as self-catering. Showers and saunas are open to the public.

■ Stay in a cottage at Brändö Konferens. Here you sleep in well-equipped cottages for four people. The cottages have a sofa bed, WC, shower, TV and kitchen with fridge/freezer. Here there are also parking spaces for mobile homes.

■ Luleå municipality offers cabins for rent all year round on the islands of Junkön, Kluntarna, Brändöskär and Småskär. The cabins have four to eight beds and access to sauna facilities with common rooms. The cabins can be booked online.

Tip!



Photo: Helena Holm

A PLACE TO ROW

From Tjuvholmssundet on the mainland, you can row a short distance over to Sandön. Here you can follow the forest paths. Go for swims and look for wildlife. Keys to the rowing boats are rented from the Luleå Tourist Center in Kulturens hus.

Relaxation or action?



Photo: Lule-Bild

Live beach life – day or night!

Luleå offers many beaches, and in the archipelago also long beaches. On warm days, dipping your toes in the sea is almost mandatory.

Or why not take a dip in the bright summer night? Few places are blessed with such luxury.

If you prefer heated outdoor pools, there are child-friendly types for all days of the week.

On visitlulea.se, Luleå's bathing spots are listed. Some are close to the city centre. Some close to the great outdoors. All worth a visit.



Go kart

For those looking for fast-paced experiences, there is the option of go-karting, solo or in a group, on a 690-metre track. The track is located in scenic surroundings along Lulviksvägen on the way to the airport.



Photo: Burban Studios

Södra hamnplan – an oasis in the city centre

In summer, Södra hamnplan in Luleå is an oasis with room for both young and old. There is plenty of space for those who wish to relax. For those who are more active, thanks to Fritidsbanken, equipment is available to borrow for various activities, free of charge. There are also a number of food trucks here, so it's a great place to go for lunch.



Photo: Luleåfotograferna

Golfängen mini golf

Here there is an 18-hole course and a covered patio where you can take a break for coffee and snacks. Enjoy a round of mini golf with friends.



Art by bike

Experience Luleå's public art from a bicycle. You will have a lovely tour of Luleå. Information and a map are available from the Art Gallery and at the Luleå Tourist Center in Kulturens hus. You can rent a bike at Cykelstället. Fully equipped with a lock, luggage carrier and bicycle basket. Of course a helmet is included.



Photo: Magnus Stenberg



High altitude zip-line

You can find Explore Luleå's high-altitude cableway Karlsvik. As you climb the high-altitude cableway and ride the zipline, you will have a magical view of the Lule River. The courses vary in difficulty and are fun for all ages.



Adventure golf

Mini golf is a real summer favourite. Both among young and old. Challenge family and friends to the clever and fun ones the courses at First Camp Arcus – Luleå. Clubs are available for both adults and children.



Norrbotten Railway Museum

Welcome to one of Sweden's largest railway museums located in a scenic area in the old industrial community of Karlsvik, 10 kilometres from central Luleå. The main focus of the museum is to preserve and display artefacts connected to the Ore Line, but there are also vehicles, buildings and other objects taken from various parts of northern Sweden.



Steel Park

Twist and turn at Sweden's northernmost concrete park for skateboards, bmx bikes and kick bikes. The park suits beginners as well as advanced and professional riders. The park is open to everyone around the clock during the summer months.



Tip!

A BEAUTIFUL ROUTE

Route 616 is a scenic stretch of 33 km on the south side of the Lule River, between Luleå and Boden. This is a scenic, rather than a speedy, route. Here are several nature reserves and attractions as well as a large number of small businesses offering products and services.

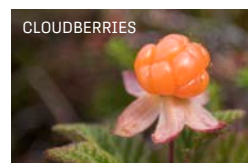


Photo: Per Lundström

PICKING BERRIES

The Swedish Right of Public Access and our clean natural environment is perfect for berry picking, either large-scale or just handfuls for your own enjoyment.

You can find **blueberries**, **lingonberries** and **wild raspberries** in the outdoors near the city, for example by veering off the larger paths on Ormberget or Mjölkuddsberget.

Luleå also offers more exotic berries such as sea **buckthorn** which grows in bushes on the islands out in the archipelago. They are rich in vitamin C and become a delicious ingredient in jam, marmalade or juice. The berries are fragile and the bush is thorny, so pick them carefully.

Also, don't miss the unique **Arctic raspberries** that are found along shorelines, open meadows and ditches. Pick the berries individually, otherwise you risk squashing them. Finally, the **cloudberry** (the gold of the forest) which you find around bogs, bogs and wetlands. Cloudberries thrive in acidic, wet environments with lots of sun and therefore they grow abundantly here in the north where there is midnight light.

Summer events

Music, theatre, festivals, art, and sports. Exhibitions, markets, and fairs. Keep an eye on the calendar at **visitlulea.se** for information about current events.



Foto: Luleå domkyrkoförsamling

Sång i parken

In June, the churches in Luleå invite you to the popular sing-along event "Sång i parken" in Luleå City Park. Choirs, soloists, and a house band with many musicians perform gospel, Swedish ballads and hymns, pop and rock – and of course, lots of choral music and sing-alongs.



Foto: Ida Lundh

International Food Festival

The popular food market, which tours various cities in Sweden, comes to Luleå at the turn of August and September. At that time, a variety of market stalls line Storgatan, offering dishes, deli items, baked goods, and sweets from different countries.



Foto: Lule Bild

Summer theatre at Hägnan

In June, Norrbottensteatern moves outdoors to the open-air museum Hägnan in the World Heritage Site of Gammelstad Church Town. Here, they present an outdoor performance suitable for the whole family. Tickets are sold through Norrbottensteatern.



Konst i det gröna

During a weekend at the end of July, Luleå Art Association organizes an outdoor exhibition called Art in the Green. Here, numerous artists display their works for sale. The event attracts many visitors who stroll among the artworks, taking breaks to enjoy coffee and refreshments along the way.



Summer festivals

During the summer, Luleå offers bright nights and a wide range of activities. Festivals, concerts, and events for all ages often center around Södra Hamnplan. During the city festival Under solen, everything from small flea markets and exhibitions to large stages and

amusement rides is arranged. The harbors, parks, and city center serve as natural gathering spots, and the pace of the city adapts to the season. It's a time when many people engage with public spaces, whether through music, markets, or simply being outdoors.



Pride

In August, Luleå bursts with color, joy, and togetherness as Pride is celebrated in the city. The first Luleå Pride was organized in 2012 by RFSL Luleå, and since then, the festival has become an annual celebration in the heart of the city. It's a time to honor love in all its forms, stand up for the right to be yourself, and show

that everyone has equal worth. Luleå Pride offers spaces for connection, conversations, music, culture—and of course, the vibrant and important Pride Parade through the city center. You're welcome to celebrate, support, and take part!



The Råneå & Vitå river valleys

The Råneå and Vitå river valleys run through the municipalities of Luleå, Gällivare, Jokkmokk and Boden. This rich natural treasure, unaffected by hydropower development, stretches from the foot of the mountain Dundret in the northwest to the outlets in the Gulf of Bothnia in the southeast. The vast and untouched forest landscape of the river valleys offer extraordinary experiences and great variety. The wildlife is rich. There are many spots to swim – in the sea, in rivers, lakes or pools. Wilderness adventures and lovely kayaking waters, as well as fishing opportunities, attract visitors. In the Råneå and Vitå river valleys, there are also several places of cultural and historical importance to visit.

Let the adventure take time, there are plenty of campsites and rest areas where you can stop for a break. In the area there are also grocery stores, petrol stations and eateries, frequented by residents and visitors alike.

Choose accommodation to suit your taste – a forest cabin, holiday village, campsite or accommodation in manor house grounds.

Knowledgeable hospitality companies are happy to guide you to the area's activities and magnificent experiences such as whitewater rafting, hunting and climbing.

Read more at visitlulea.se. There you can also download the guide "Gems of the Råneå and Vitå river valleys" as a PDF. The guide can also be collected from the Luleå Tourist Center.



15 villages in the river valleys with destinations you don't want to miss. Pick and choose, or visit them all!

KÄNGSÖN | RÅNEÅ | BÖLE

In Råneå, both sea and forestland are close. Kängsö harbour and Råneå's church cottages are picturesque environments. The Råne River is considered one of Sweden's best fishing waters for pike, trout, grayling, perch and crayfish.

RÖRBÄCK | JÄMTÖN

The stretch of the Vitå River running through Luleå Municipality is 50 kilometres long. The last leg of its journey to the sea runs through the wide but shallow Vitåfjärden, on to the Jämtöälven rapids, towards the Rånefjärden estuary.

PRÄSTHOLM | ORRBYN | NIEMISEL

Along route 760 from Råneå on the north side of the river, the villages lie like a beautiful string of pearls one after the other, and between the villages farmlands, meadows and pastures spread out with the river rippling in the background. Here there are several destinations at which to stop, with fine fishing spots and several open cabins for overnight stays. Along the southern side of the river are mountains Snöberget and Pålberget.

LASSBYN | SÖRBYN | GUNNARSBYN

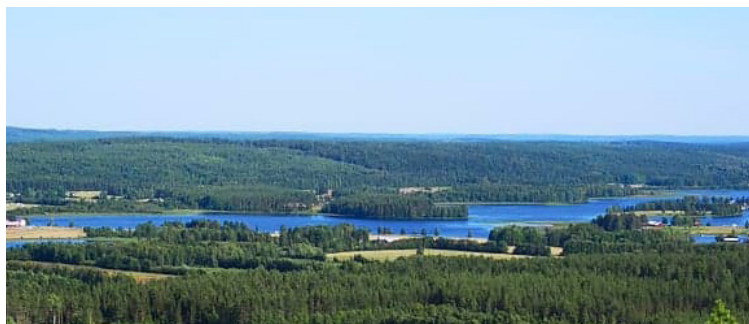
When you have passed Niemisel along route 760, you will reach Lassbyn, Sörbyn and Gunnarsbyn. A cluster of villages that are more or less connected. There are several interesting destinations and sights to see in the area. You can stay in a pre-booked cabin, an open cabin which can not be booked in advance, at a hotel or park your campervan or caravan in a designated location.

ÖVERSTBYN | VALVTRÄSK | MÅRDSSEL

North of Gunnarsbyn lies Överstbyn, after which the road continues towards Valvträsk and Mårdsel. The landscape changes as you follow the Råne River upstream. As you pass Valvträsk, it changes character, from agriculture and farming to more that of forestland. You are approaching the Arctic Circle.

VITÅDALEN

The area is rich in birds and animals. Otters, beavers, dippers, swans and geese thrive by the small forest river. Beautiful old farmlands, remains of the 19th century mills and the highest mountain in the municipality are all found in Vitådalen.



Mountain peaks and viewpoints

1. **PÅLBERGET 137 M:** Beautiful view of the Råne River and Pålträsket. There are exciting caves to explore here.
2. **SNIPEN, 171 M:** A strange mountain peak with a wonderful view of the river valley. A hundred-year-old pine forest is recovering after a forest fire and on the mountain you can see Snipkon, a formation in the rock.
3. **SNÖBERGET 241 M:** A till-capped hill; the top has never been affected by the surging of the ocean waves. The hillsides are bare rock and mighty shingle fields, shaped by ice and waves.
4. **STORKROKBERGET 307 M:** Luleå's highest mountain, its characteristic silhouette can be seen far and wide in Vitådalen.
5. **Åbojen, 332 M:** From the top you have a beautiful view of the river valley. The steep eastern slope hosts an old pine forest with plenty of old aspen trees as well.



Look at rare plants

The flora and fauna of the river valley are unique. A total of 318 vascular plants, many of them very rare, have been registered on the river's banks and bottoms. There is great species diversity. Red baneberry, river lettuce and *Persicaria foliosa* are some of the rarer species. In addition to a strong fish population you will also find noble crayfish, freshwater pearl mussels, white-throated dippers as well as beavers and otters here. Several rare flowers thrive here, such as the calypso orchid, lady's-slipper orchid and the lesser butterfly-orchid.

We recommend making a trip to Jämtöavan, Yttre Kvarnträsket. Eleven species of orchids grow here, flowering at different times from May to August. Eating your packed lunch is best done at Kvarnträskkojan, which is a rest cabin with a barbecue area.



Photo: Lule-Bild

Crayfish fishing on the Råne River

Crayfishing is a major event and traditionally a family feast, for a few days in August. The lower part of the Råne River has one of Sweden's richest noble crayfish populations. At dusk, small fires are lit and people gather to heat a tasty treat or just socialise as they wait to empty the fishing traps. The crayfish are boiled with dill according to a secret recipe and served with delicious condiments. The crayfishing parties are highly popular and a perfect way to round off the summer season. The crayfish was introduced into the Råne River during the 1950s and a strong population has been established from the sea at Råneå and upstream. The noble crayfish has thus far avoided the spread of the crayfish plague. It is therefore important that the gear used here has not been used in other waters.



Photo: Per Lundström



Autumn in Luleå

Would you like to experience nature's mighty display of colours? Then you should visit Luleå from mid-September to mid-October. Autumn in Luleå is characterised not only by the fact that the people of Luleå start "nesting" for winter, but also by the fact that arenas and concert and theatre venues are filled with people who want to revel in sports and cultural experiences at the highest level.

SEPTEMBER

OCTOBER

NOVEMBER

DEC

This time of year, when nature prepares for winter hibernation, the people of Luleå do the same and shift their focus to indoor life.

While the temperature drops outside, it gets warmer inside the city's various sports arenas, which are filled with audiences several times a week and become a natural meeting place for locals. Here, ice hockey and basketball are played at a premier league level, and the range of concerts, theatre and dance performances is wide. You have the chance to hear local, national and international musicians and artists in a wide variety of genres and watch theatre and dance by local as well as visiting ensembles.

It is still snow-free, but sometimes quite frosty in the mornings. Days are a mix of sunshine and rain, growing shorter and darker, while evenings invite peaceful walks under the glow of the streetlights.

And perhaps the best thing about this season is the possibility to see the northern lights on clear evenings and nights. Just before the snow and the real cold arrives, is one of the best times for aurora spotting – and the open water can create stunning reflections for photography.

Mittens and a hat are good things to pack when you visit us in the autumn months. Welcome to autumn in Luleå!



Temperature: -10 to +15°C.



Weather: More humid and windier than in summer, mixed with clear days with fine autumn air. Precipitation turns to snow at the end of November.



Day light: 15–4 hours.



Photo: Gunnar Laak

Cultural events

During the autumn, the event season truly begins. Enjoy concerts with both local, national and international artists, at, for example, Kulturens hus or Kulturcentrum Ebeneser. Experience high-class theatre performances at Norrbottensteatern or attend larger shows and events at Luleå Energi Arena or Coop Arena.

KULTURCENTRUM EBENESER

The old ochre-yellow Church in the middle of Storgatan in Luleå is a typical example of large-scale Art Nouveau architecture. It is now home to the Ebeneser Cultural Association, offering a multicultural range of activities in an inspiring café environment. Ebeneser has an open stage for both spontaneous and planned events.

KULTURENS HUS

This house offers a panoramic view of Luleå's north harbour. The three storey building houses the city library, art gallery, tourist center, conference facilities, concert halls and a café and restaurant. Here you will find different cultural and musical events. The art gallery displays contemporary art mainly from Sweden, but also from other countries. There are also lectures, an open art workshop and guided tours.



KULTURENS HUS

NORRBOTTENSTEATERN (the Norrbotten county theatre)

Beautifully located by Luleå's north harbour. Performing arts of high quality are shown here, for both young and old. In addition to their own productions, the audience can also see popular guest performances and watch topical conversations on stage. The repertoire is a mix of timeless classics and constantly current, exciting, newly written drama. The house restaurant Biströn is an excellent place to enjoy a meal.

VETENSKAPENS HUS (the house of science)

Today, the city's old post office houses Vetenskapen hus. In the large, airy room, you can participate in events focusing on research, education and artistic development work. The house is for the public and is an open place for meetings. You can also enjoy coffee, pastries and food at the restaurant Unik, located in the same building.

SLÖJD & FORMCENTER (the crafts and design centre)

Slöjd & formcenter is a collaborative project for crafts, art handicraft, design, architecture, sustainable construction and designed living environments. The purpose is to strengthen and highlight the field of crafts and design in Norrbotten and make it more accessible. Their public exhibitions can be seen at the 'Shopping' mall.

Luleå has a wide range of events and hopefully you will find something in our calendar at visitlulea.se that suits you.





Photo: Viveka Österman

Experience sports

Feel the pulse of hockey and basketball games at the highest level. The people take great pride in their sports teams. During autumn and winter, there are plenty of games to enjoy – and experiencing the energy of a home crowd is something truly special. Combine the thrill of the game with great food, drinks, or snacks available at the arenas.

BC LULEÅ & LULEÅ BASKET

Luleå is known as Sweden's basketball capital. With their home arena, Luleå Energi Arena, and the restaurant Live, the men's team BC Luleå and the women's team Luleå Basket have created an international atmosphere around their games. Luleå Basket, with nine Swedish championship titles under their belt, also boasts the highest attendance numbers in the country for women's basketball.

LULEÅ HOCKEY & LULEÅ HOCKEY/MSSK

If you've never visited Coop Norrbotten Arena—commonly known as "Delfinen" (The Dolphin)—now's the time. It's the home arena of the men's team Luleå Hockey and the women's team Luleå Hockey/MSSK, offering a high-energy experience filled with passion, tradition, and a strong sense of community. The arena also features several restaurants and kiosks.



Photo: Ola Norén

Konsthallen (The Art Gallery)

Visit the art gallery in Kulturens hus, which is right in the heart of Luleå. Art exhibitions are shown here all year round, across four different periods. Visitors are given the opportunity to immerse themselves in the art through guided tours and practical workshops suitable for all age groups.

In addition to showing art, they organise artist talks, seminars and educational events to promote dialogue between artists, audiences and society at large.



Indoor activities

Luleå offers plenty of indoor activities for the entire family to enjoy.



Photo: Magnus Stenberg

Leos Lekland

Ball pit, slides, climbing walls, tubby slide, spider tower, and much more for children from 1 year and up. Adults can relax in the café while the kids play. Connect your phone to Leo's WiFi and enjoy free internet. Did you know that Leo's Playland was founded in Luleå?

Teknikens Hus

Teknikens Hus (the House of Technology) is a popular destination for the family. Discover technology in our world, explore together or on your own. Learn more about the internet in our everyday life in the exhibition on Facebook's Luleå Data centre. Daily screenings in the Planetarium, dome movies or viewing of the starry sky. Family workshops and construction assignments.



360 Trampoline Center

An adventure beyond the ordinary awaits at 360 Trampoline Center. In addition to all the attractions, there are party rooms and a section for coffee and relaxation. The trampoline park offers activities for all age groups.



Klätterhuset

Here you'll find bouldering, top roping, and trail climbing. Here, you climb as high as you want and use the holds you prefer. The climbing center also features a gym, shop, café, and changing rooms with showers and a sauna.



O'Learys

Satisfy your hunger, watch live sports, or compete with friends. Here you'll find bowling lanes, an arcade with video games, pinball machines, air hockey, billiards, and shuffleboard, as well as bleachers, a restaurant, and a dance floor. There's also a rooftop terrace.

Foto: Luleåfotograferna



Pontusbadet

Pontusbadet is a charming 1950's style swimming pool complex, focused on various forms of swimming training and competitive swimming. The pools are used by swimming associations and individuals swimming for leisure.



Flygmuseet F21 (F21 Aviation Museum)

The F21 Aviation Museum is located just outside the entrance guard at Norrbotten's air flotilla, F21. The exhibitions at the Aviation Museum describe the air defence of upper northern Sweden from the beginning of the 1940s, with the region's often extreme climate. Our Viggen fighter jet simulator JA 37 DI gives you a thrilling and realistic flying experience. Try to take off, handle the aircraft in the air and land "for real". You will be manoeuvring over Luleå, the bridges and the archipelago, high or low, and the whole of Sweden is there.

Tip!

RELAX AND ENJOY

After a day out in the fresh air, it feels great to treat yourself to a body treatment and spa. The word 'spa' can be traced back to the Latin phrase "salus per aquam" meaning "health through water". Regardless of whether you wish to use the pool, sauna or some other water-based relaxation, or enjoy more in-depth massage treatments, the range in Luleå is wide. Try the seasonal sauna at Clarion Sense, enjoy the bubbles of the Hotell Savoy jacuzzi or splash in the outdoor pool at Alcatraz. A visit to Luleå can definitely leave you revitalised as there are also plenty of hairdressers, barbers and beauty salons here.



Go to the cinema

■ **Filmstaden** is one of the oldest still operating cinema companies in the world. Filmstaden has six cinemas and all are wheelchair accessible (manual wheelchair only). Two of the cinemas can show 3D films.

■ **Folkets Bio** in Luleå shows quality films several evenings per week and also offers daytime cinema occasionally. The programme also includes live broadcasts of opera, ballet, theatre and exhibitions by major artists.



Shopping

*Would you like to browse peacefully in small boutiques,
feel the city pulse in the bustling malls or shop outside the city centre?
Welcome to the shopping city of Luleå. Where everything you need is within easy reach.*

Luleå's shopping scene is highly accesible. The main shopping street, Storgatan, is home to the Smedjan, Shopping and Strand malls. In central Luleå you'll find several of the Swedish fashion chains alongside independent stores offering a wide range of fashion in the form of accessories, clothes and shoes.

Take a well-deserved shopping break at one of the cafes or treat yourself to a new hairstyle, fresh nails, or stylish new frames to your glasses.

Heading north toward Gammelstad, you'll pass a stretch of retail parks and specialty stores offering

everything from construction supplies and interior design to gardening and automotive products.

A few more kilometres further, at Storheden, you'll find a large shopping area with major chain stores for sports, electronics, home décor, and pet supplies.

In Gammelstad Church Town, you'll also discover charming shops selling locally design products, art and handicrafts – perfect for unique gifts and souvenirs.



SHOPPING IN THE 50S.



Photographer unknown. Luleå municipality's city archive.

DID YOU KNOW THAT...

...the mall named 'Shopping' was inaugurated on 27 October 1955 and is not only Sweden's, but also the world's first indoor shopping mall. The shopping centre in Luleå is one of the buildings in the heart of the city considered to be of cultural and historical value. The building was designed by architect Ralph Erskine and it is said that he wanted to create something more than just a shopping mall; he wanted city life to move indoors during the winter months and 'Shopping' was therefore meant to encourage meetings and togetherness.

Locally produced crafts

If you wish to buy a souvenir from Luleå and Swedish Lapland, we can recommend **Lapland Heartwork** in central Luleå and **Arctic Collection** on the outskirts of Gammelstad's church town. Here you will find handicrafts and souvenirs from Norrbotten and northern Sweden. Don't miss the amazing pewter bracelets.



Midway between Luleå and Boden, on the south side of the Lule River, is **Avångården**. In the shop you can buy leather, yarn and hand-knitted garments. Most hides are sold processed, but some are sewn into carpets, quilts, and cushions.

Unique shops

Modelljärnvägsspecialisten – the Model railway specialist is one of Sweden's largest hobby shops. Here you will find most things related to model trains, radio-controlled toys, landscape materials, paint and building kits. They also have model cars and model aeroplanes.



WIDE SELECTION

Norra Bo – Pentik Luleå designs and offers various collections produced under its own brand. The product range includes collections of ceramics and glassware, interior and table textiles, fixtures, furniture and deli foods.



At the **Luleå Tourist Center** in Kulturens hus and the **Visitor Center in Gammelstad**, you can buy Luleå branded souvenirs. Part of the range is seasonal.

Shop sustainably

In Luleå there are several second-hand shops that offer everything from bicycles and tools to unique clothes, porcelain and toys. Do you like antiques? Keep an eye on **Luleå Auktionsverk's website** for opportunities to bid on something antique.



A GOOD CHOICE

Visit the **second hand shop Samlat**, which is located at Köpmantorget. Here you can repair, borrow, exchange and buy recycled goods with the aim of expanding the use and extending the life of gadgets and materials.

The Food City

Truly treat yourself at one of Luleå's gourmet restaurants or grab something quick on the go. Here you will find local delicacies as well as flavours from around the world.



DID YOU KNOW THAT...

...in Luleå there are several high-class restaurants. With chefs who have left international Michelin restaurants to settle here in Luleå and sommeliers who have been responsible for drinks during royal weddings. Gastronomic knowledge and qualifications are found throughout the city. Luleå also offers creativity and a safe, relaxed atmosphere. Fine dining is both fine, fresh and fun here! Read more about the food city of Luleå at visitlulea.se.



Eating out, or eating out

To eat out has two different meanings in Luleå. Truly treat yourself at one of the city's gourmet restaurants, where skilled chefs prepare local, high-quality ingredients with a steady hand and give you Swedish Lapland's full palette of flavours. You simply have to eat the delicious, nutritious game, reindeer and elk that have lived in the wild, enjoy game fish that have swum in pure, clear waters and let yourself be seduced by blueberries, cloudberries, arctic raspberries and lingonberries that have ripened in the midnight sun.

Eating out also has another, more literal interpretation, here in Luleå – when the food is served outside. Nothing tastes as good as a meal cooked over an open fire, preferably to round off a day of great outdoor activities. A muurikka (a large frying pan) is often used to cook things such as suovas, lightly smoked reindeer meat, or fry palt, Swedish potato dumplings.

Is your stomach rumbling? See tips on places to eat at visitlulea.se.



Tip!

LOCAL AND GLOBAL DELICACIES

In Luleå you will find a wide range of delicacies and foods, both local and global. Here, small farm shops, large grocery stores, cafes and restaurants exist side by side deli departments.



Photo: Andreas Wäitalo



Photo: Fredrik Broman



Photo: Tomas Bergman



Try bar hopping

If you like to hang out with friends over a glass of something, there are plenty of choices in Luleå. We guide you on a bar tour: We start at the top of Storgatan at **Restaurant CG** and **Bar CG**, both of which have a large selection of drinks. Then we continue down Storgatan and at Elite Stadshotellet you will find **The Bishops Arms** with Luleå's largest selection of beer and whiskey. Take the opportunity to taste their own brew. We then take a detour down to the north harbour with a view of the water. Here you will find **Hemmagastronomi** where the cocktail bar is open from the afternoon until late at night. In a harbour warehouse further away you will find **Bistron** where you can also treat yourself to a drink, perhaps some locally produced beer, if you are visiting the Norrbottensteatern theatre next door. Back on Storgatan again, we visit **Invit Bar X**, serving new cocktails and true classics. If you are looking for a real high point, take a detour to Luleå's sky bar and restaurant **Nine at Clarion Hotel Sense** opposite Kulturens hus. Enjoy a good cocktail with a fantastic view of Luleå's northern harbour and the rooftops. The round tour is finishing as we are back on Storgatan and slip into **Ego Bar & Restaurant** at Hotel Savoy. Here you can relax with something from the bar and listen to music. Like we said, Luleå has something to suit all tastes.



Time for "Swedish fika"

A warming cup of tea. A freshly baked bun. A lovely piece of cake. A strong, invigorating Espresso. A molten chocolate cake with cream. A steaming hot cup of chocolate. There are many variations of a Swedish fika and what is better after a day full of activities, than to visit one of the city's cafes? Why not enjoy the renowned **Börje Olssons Konditorier**? Since 1958, they have been serving good coffee, fresh, hearty sandwiches and sweet baked goods from their own bakery. Tips for more cafes can be found at visitlulea.se.



Photo: Carl-Johan Utsi

Local food words

Muurikka: Portable frying pan, reminiscent of a wok, to prepare meals outdoors, over an open fire.

Palt: Dumplings made of potatoes, flour and salt and, depending on the chef, filled with salted pork. Served with butter and lingonberry jam. If you eat too many, you can suffer from drowsiness, so-called palt coma.

Sunströmming: Fermented Baltic herring served with boiled potatoes and onions rolled in flatbread. The smell when opening the can is very peculiar but the taste is known to be far more pleasant, mainly salty.

Coffee cheese: Squeaky cheese, served cubed in the hot coffee – instead of pastries. Also makes a good dessert, lightly fried with warm cloudberry.

Gáhkku: Chewy Sami flatbread that's also suitable for frying in a muurikka. Closely related to kladda and glödkaka.

Suovas: Lightly smoked reindeer meat, usually also salted for longer shelf life. Excellent for outdoor cooking.

Kåsa: Traditional wooden drinking or serving vessel for drinking coffee in the forest.



Photo: Per Lundström

Plan your trip

Get to Luleå



Foto: Capri Norman

Flights

Luleå has several direct flights from Stockholm every day, which makes our city one of the most easily accessible in Sweden. It takes just over an hour to fly from Stockholm Arlanda to **Luleå Airport**. From the airport, it takes 10–15 minutes by bus to reach central Luleå.

Train

Every day and night, trains go to and from **Luleå Central Station**. The train station is close to the town centre and it only takes a few minutes to reach central Luleå by foot.

Bus

You can travel to **Luleå bus station** from our neighbouring municipalities in Norrbotten. You can also travel from Skellefteå and Umeå in Västerbotten. The local buses operate via the Smedjegatan/City stop.

By car

European Route 4 4 (E4) in Sweden runs between the cities of Helsingborg and Haparanda. If you are travelling by car north on your way to Luleå, it is the easiest way to get here. You can find charging points for electric cars using an app such as ChargeFinder.

Get around Luleå



Foto: Daniel Holmgren

Luleå Lokaltrafik (local public transport)

Luleå Lokaltrafik's buses will take you around central Luleå and areas such as Gammelstad, Luleå Airport, Hertsön and Porsön. The central station is called Smedjegatan/City and lies next to the Smedjan mall, across Storgatan. Bus timetables are available on Luleå Lokaltrafik's website lt.lulea.se and in the "Luleå Lokaltrafik" app. Here you can also see a map of Luleå Lokaltrafik's main lines. The bus journey is paid for by card on the bus or with the app. There are also sales representatives in several locations. At the LLT info store on Smedjegatan 13H you can get help with everything related to your travel.

Länstrafiken (long-distance public transport)

Länstrafiken's buses serve the villages outside the central town and the rest of Norrbotten. The buses depart from Luleå bus station (close to the train station, Luleå central station).

Bus journeys can be purchased through the app and paid for by card on the bus. Bus timetables are available on Länstrafiken's website lanstrafikennorrbotten.se

Taxi and rental cars

There are several taxi and rental car companies in Luleå.

Information for planning your trip to Luleå can be found at visitlulea.se.



BUY OR RENT WHAT YOU NEED

■ **Äventyrsbutiken Hägglunds** (The adventure store Hägglunds) is located in central Luleå and is filled to the brim with a complete range of equipment and clothing for all types of activities, whether you are a beginner or an experienced adventurer. Buy or rent what you need.



BORROW USED EQUIPMENT

■ **Fritidsbanken** lends used sports and outdoor equipment free of charge for up to 14 days. Everything from ice skates, hockey sticks and skis to tennis rackets, hobby horses and helmets. The items that are donated by the public are used and reused throughout their entire lifespan, which is good for both people and the environment.



The Right of Public Access

The Swedish Right of Public access is a unique right that builds on being responsible together. It is embodied by showing respect for animals, nature, landowners and fellow human beings. It's easy to get this right, right!

DO NOT DISTURB, DO NOT DESTROY

In the Swedish outdoors, we can move freely. We can pick flowers, berries and mushrooms. We can swim, camp, hike, cycle, travel by boat, make a campfire and do other outdoor activities.

The Right of Public Access is a privilege and a freedom that depends upon people acting responsibly and carefully towards the natural environment.

MAKE A FIRE

Fires are usually allowed under safe conditions, so be sure to choose your fire pit carefully.

If the weather has been good and without much rain, the forest and ground will be very dry, so pay attention to the conditions.

In nature reserves, special rules apply to fires, on Bäligeberget, for example, there are special fire pits and free firewood available to use. In other reserves it may be completely prohibited.

FISHING

In the sea, rod fishing is unrestricted, but there are rules for how, when and what you can fish. Lakes and rivers normally require a fishing licence.

VEHICLES

According to the Off-Road Driving Act, it is forbidden to drive motor vehicles on bare ground off the road. This

applies not only to cars, but also to quad bikes, motorcycles and mopeds. If you approach a private road, it may also be forbidden to enter it unless you are a landowner.

With a few exceptions, it is forbidden to drive snowmobiles on the islands of the Bothnian archipelago. Cottage owners are allowed to take the closest route to their cottage. Prohibitions apply within urban areas, except on designated trails. Within nature reserves, the rules differ from reserve to reserve and you are obligated to inform yourself of what applies before you head out into the woods and fields.

ON THE WATER

The right of access also applies on water and the requirements for consideration are the same as on the mainland. There may be rules about speed and prohibitions related to jet skiing.

You are allowed to go ashore, swim, camp and moor the boat for the night almost everywhere.

Few things compare to silently gliding along in your kayak, in coastal bays, open water or rivers and streams. When moving by kayak, it is easy to get close to mammals and birds. Remember not to disturb them and be mindful of nesting birds on islets and in old trees.

BREEDING GREAT CRESTED GREBE.



Photo: Thomas Öberg

In the archipelago there are seal and bird protection areas where it is forbidden to go ashore during certain times of the year, usually 1 May–1 August.

HUNTING

The right of access also applies during the hunting season – everyone has the right to stay in the forest. Sometimes hunters put up signs to inform everyone that hunting is in progress – animals may come rushing through, shots may be fired and dogs may bark. As always, be considerate, do not disturb dogs or wild game.



You can find links to information about nature reserves and the Right of Public Access at [visitulea.se](https://www.visitulea.se).



Photo: Peter Rosén



Looking to get the most and the best out of your stay in Luleå and the surrounding area?

Come visit us at the tourist center and we will help you find great experiences in our city. You will find us on the ground floor of Kulturens hus in the heart of central Luleå.

Here you can find information about everything you could possibly want to see and experience – everything from archipelago boats and accommodation to events, attractions, tips on outings and local gems.

We provide you with brochures and maps that are good to have when exploring Luleå and the region.

Winter, spring winter, spring, summer and autumn. Welcome to experience all our seasons.



The tourist center sells Luleå souvenirs.



LULEÅ
TOURIST CENTER
KULTURENS HUS • VISITLULEA.SE



READ MORE:

visitlulea.se | lulea.se | swedishlapland.com

SHARE YOUR EXPERIENCE:

#visitluleå #luleå #swedishlapland